

CAMBO News

June 2009, a newsflash from Cambo Fotografische Industrie BV in the Netherlands

Cambo is pleased to inform you about their latest developments, improvements, changes and additions to the several product lines.

X2-Pro:

The X2-Pro is a well-received tool for the professional and semi-professional shooter who is looking for more possibilities compared to regular TS lenses. Its strong features include:

- Combined tilt-swing-shift into 4 directions with every lens that fits the X2-Pro
- Use of lenses with larger image-circles allowing for more movements and freedom
- Use of well-known and well-respected Hasselblad and Mamiya optics
- Precise geared movements allow for exact sharpness plane corrections *-use live focus !!!-*
- Build-in close-up options.

For those users that need more flexibility between normal and macro style photography Cambo now has a Macro option available with 150mm extra extension.

This allows for shooting as close as 20 cm using a 120 Macro-Digital (way over 1:1) and over 2:1 macro using a 80 mm Macro-D.

| | | |
|-------------------------|----------------|--|
| Cambo part nr.99010566: | X2M-Pro | Camera Body with extended monorail |
| Cambo part nr.99010568: | XM-150 | Monorail with focussing block for retrofitting to X2-Pro |
| Cambo part nr.99030411: | XMBC-35 | Extended Bellows Canon bayonet for X2M-Pro |
| Cambo part nr.99030412: | XMBN-35 | Extended Bellows Nikon bayonet for X2M-Pro |
| Cambo part nr.99030413: | XMBM-35 | Extended Bellows Mamiya bayonet for X2M-Pro |

Also now available for the real specialists:

| | | |
|-------------------------|--------------|----------------------------------|
| Cambo part nr.99074202: | X-202 | X2 Lensboard with 0.3 mm PINHOLE |
|-------------------------|--------------|----------------------------------|

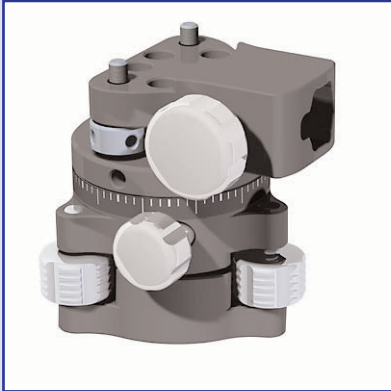
CMSLB: MultiStep Sliding Back

The Multistep Sliding Back is available for the Ultima 23 as **CMSLB-23**, for the Ultima 45 as **CMSLB-45** and for Sinar 4x5 cameras as **SMSLB-45**. The current version is equipped with a ground glass with framing for different CCD's and has a fresnellens, but without viewing hood. There is an optional choice of either the SLV-945 reflex viewer (right-side-up) or the SLV-616 direct viewing hood. The hoods can be hinged out of position to allow for a magnifying loupe. The use of the fresnellens takes the space for the framing masks, which can't be used anymore. Adapting plates for the CMSLB are the same as used on the WideRS, available for Hasselblad H and V-mount, Mamiya 645AFd, Contax 645 and Leaf Afi/Sinar HY6. Features include:

- Stitching option with optional inserts for exact overlap in portrait and landscape position
- Fresnellens included
- Printed CCD format framing on ground glass
- Optional Reflex Viewing Hood or Direct Flexible Viewer, detachable
- Interchangeable SLW adapter inserts for broad range of digital backs
- Gear-driven position change between stitching position to avoid movements.

Wide RS:

The Cambo Wide RS has proven to be a very successful camera platform for the architectural, interior, industrial and landscape shooters. To serve the needs of the photographers even better, Cambo has added more lenses, possibilities and accessories.



WRS-333 is an optional Leveling Base for the WideRS which replaces the default Base and has improved functionality.

Its added features include:

- Precise Levelling within 5 degrees over 3 individual levelling knobs for exact 3D Levelling
- 360 degrees panning above the corrected level, for either quick access to lens settings or for panoramic movements in a levelled plane
- Spigot Accessory Mount for general mounting of light-aids, shades, brackets or holders.

Cambo part nr. 99162133: **WRS-333** Levelling Head for WideRS

WTS Wide Tilt-Swing Lenspanels

Cambo is pleased to announce the coming introduction of new Wide lenspanels for the Wide RS, the Wide DS and Wide Compact with built-in Tilt and Swing movements.

The use of tilts and/or swings will allow the photographer to optimise the spatial sharpness by tilting the sharpness plane into any direction as desired. The WTS lenspanels will have their mechanisms built-in, so there is no need for additional in-between adapters or bellow joints. This will assure a very precise sharpness plane with exact parallel planes of CCD and lens. Key features of the WTS Lenspanel are:

- Knob driven fine-gear movements for Tilt and Swing
- +5/-5 degrees Tilt and +5/-5 degrees Swing into both directions
- Tilt and Swing in separate movements, which can be used simultaneously or individual
- No need for separate adapter, all mechanical parts are built-in
- Interchangeable with existing WRS, WDS and WideCompact camera bodies and lenspanels
- Options to retrofit into WTS lenspanel
- Available with Schneider Lenses Digitar 47, 72, 90, 120
- Available with Rodenstock Lenses Digaron 28, 35, 40, 50, 70 and 90
- Shift possibilities in the WideRS body allow for shifts without changing lens position

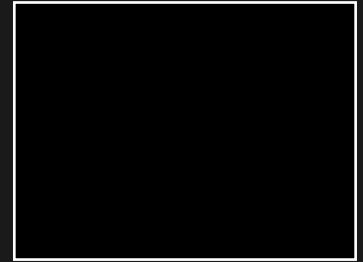


These pictures show the Wide RS with 47mm Lens mounted in a WTS version Lensboard.

Also shown is the WRS-333 Levelling Base mounted on the Wide RS



The WDS-574 Lenspanel is a short barrel version of the WDS-575, consisting of a WRS-1048 adapter and a Digital 120 SB-Lenspanel. This combination allows for use of full shifts on the WideRS without vignetting due to the lensbarrel.



Combo part nr. 99161574:
WRS-574 Short Barrel Lenspanel 120

The WRS-1048 is also a Macro-Adapter in combination with regular WDS Lenspanels, extending the focal plane distance with 48mm. This allows a WDS-556 Lenspanel with 47 or a WDS-557 with 50mm Lens to shoot at a 1:1 ratio, and shorter lenses with even more enlarging !!
Combo part nr. 99161048: WRS-1048 Macro-Adapter.

Panorama Head:

Cambo has developed a new Camera Head, which is optimised for the use as Panorama Head. The system is build out of components that can also be acquired separately.



The Basepart is a Head with a Levelling mechanism that allows for fine-tuning the exact horizontal level within a range of 5 degrees, using three knobs. This Base fits to any tripod head with 3/8" or 1/4" mount, has a quick release for a camera plate and a 360° panning function.

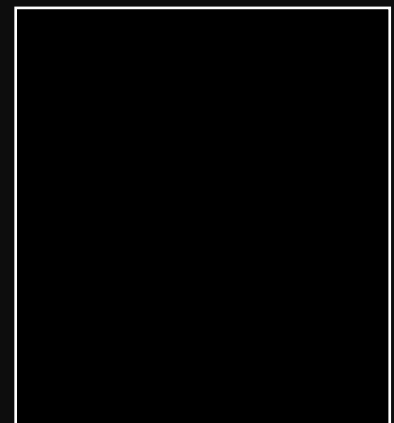
The panoramic rotation has a preselector switch to set a number of fixed intervals with indents during panning.

A choice between just 2 (180°), or 6 (60°) or 8 (45°) intervals is conveniently set with one simple twist of a knob.

The camera plate can slide backwards and forwards in its mount for the purpose of finding the desired nodal point position of the lens in use. A precise scale will assure easy repeatability of your settings.

For shooting in portrait mode of the camera, Cambo delivers a separate L-Bracket, which fits in the same quick release mount and features sliding movements left / right, up / down and accepts the sliding camera plate in order to find the exact nodal point position for each setup. Of course, millimeter scales will assist in repeating the needed positions time after time.

The Panorama Head System can be fully taken apart thanks to the quick release mounts for easy transportation in a convenient small case and is easy to setup thanks to the scales.



Combo part nr. 99121450: CLH-533 Panoramic Level Head with QR Plate

Combo part nr. 99121451: CLH-510 Quick Release Plate (1/4 and 3/8 mount)

Combo part nr. 99121455: CLH-520 L-Bracket

Combo part nr. 99121500: CLH-500 Panoramic Level Head Set Complete