

Image above shows the Artes setup for a MPT or EPT head.

USER MANUAL

EN

Please read this manual carefully before using the Cambo ARTES!

Thank you for purchasing a Cambo® product

The Artes is developed as a lightweight modular Video Booms. The Artes can either be used with a fixed camera plate or with a manual (MPT) or electronic (EPT) driven heads.

These instructions give you a full mounting description of the ARTES Video boom. The ARTES combines modularity, design and affordability into a flexible new Video boom System. The Artes kit includes extensions for several set-up possibilities. Once the Video boom is set up the first time, it quickly breaks down and sets up without keys necessary and fits into a compact soft-case (not included) that is available from your Cambo dealer.

Please note: this manual describes the assembly of two versions of the Cambo Artes video-boom, namely the standard (fixed plate) version and the EPT/MPT version. The Artes tilt version is described in the separate “Artes Tilt” manual.

⚠ WARNING



WARNING: moving parts - finger or hand crush

Please keep hands and fingers clear from the moving parts of a operational Artes unit.



WARNING: keep clear of obstacles when operating the Artes video-boom.

CAUTION: before use check if all the clamping bolts are tightened (do not overtighten)

INSTRUCTION ARTES-UNIT

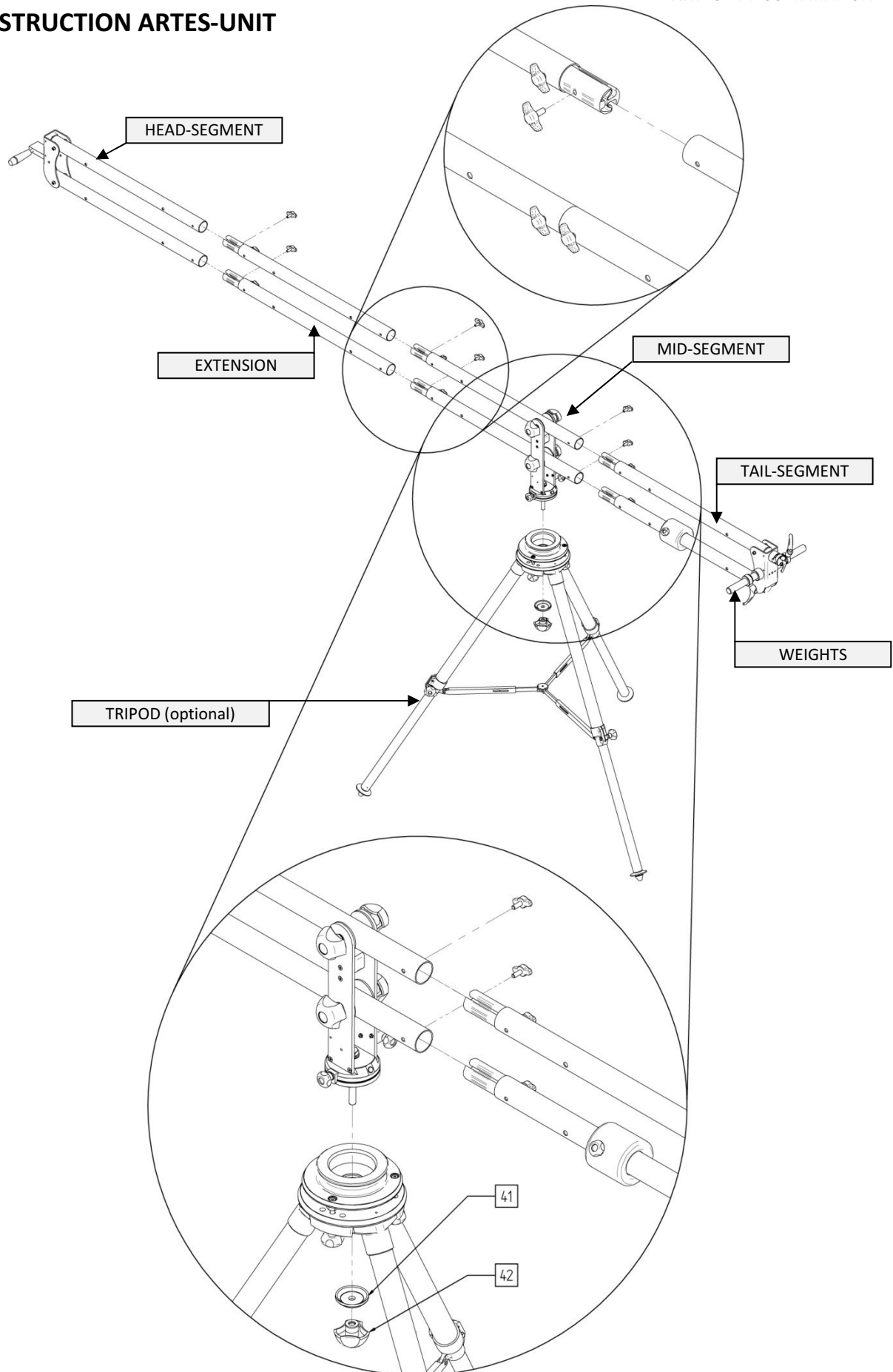


figure 1: ARTES setup overview (MPT and EPT setup)

ITEM LIST ARTES

1	Tube clamp	23	Hexagon Dome Nuts M6 (din1587)
2	Locking bolt tube clamp	24	Washer 6,4 (din125a1)
3	Tube segment (0,75m)	25	Hexagon Socket Head M6x75 din912
4	Reinforced tube segment	26	Front segment assembly
5	Nylon bearing disc	27	Brass bearing
6	Locking knob ARTES rotation	28	Adjustable counterweight
7	Teflon [®] ring	29	Hexagon Socket Head M6x20 din912
8	Locking knob with axis	30	Washer 6,4 (din125a1) (same as #24)
9	Washer 10,5 (din125a1)	31	Rear-end profile (same as #22)
10	Locking knob ARTES movement	32	Clamp for EPT control frame
11	Mid-segment assembly	33	Hexagon Socket Head M8x20 din912
12	Hexagon Prevailing Torque Nut M4 (din985)	34	Washer 8,4 (din125a1)
13	Standard stud adapter (e.g. monitor arm)	35	Filling ring counterweights
14	Locking knob accessory stud	36	Locking ring counterweights
15	Cross Countersunk Screws M4x40 (din965)	37	Counterweights axis
16	End cap tube segment	38	Direct camera plate (if not using the EPT)
17	Handle and locking bolt EPT-unit	39	Hexagon Socket Head M5x16 din912
18	Adapter for EPT unit	40	Washer 5,3 (din125a1) (same as #19)
19	Washer 5,3 (din125a1)	41	Clamp ring tripod bowl
20	Hexagon Socket Head M5x16 (din912)	42	Knob clamp ring tripod bowl
21	Delrin [®] filling ring		
22	Front-end profile		

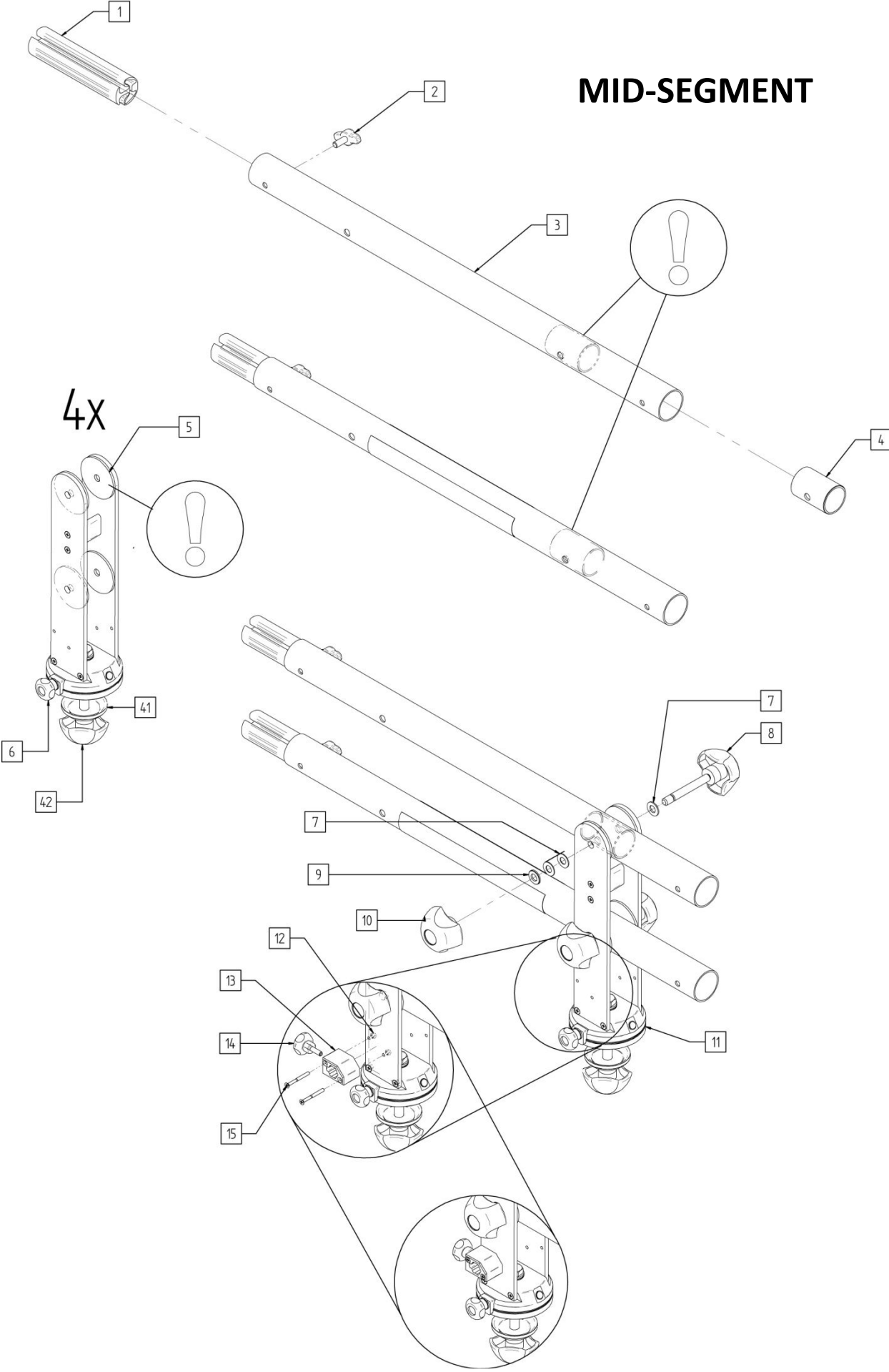


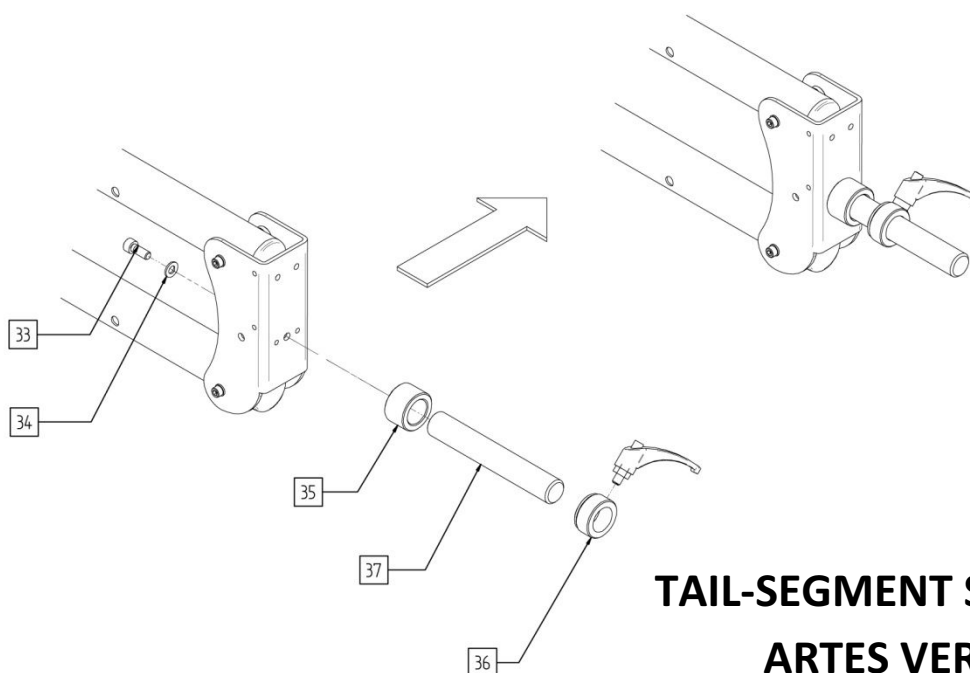
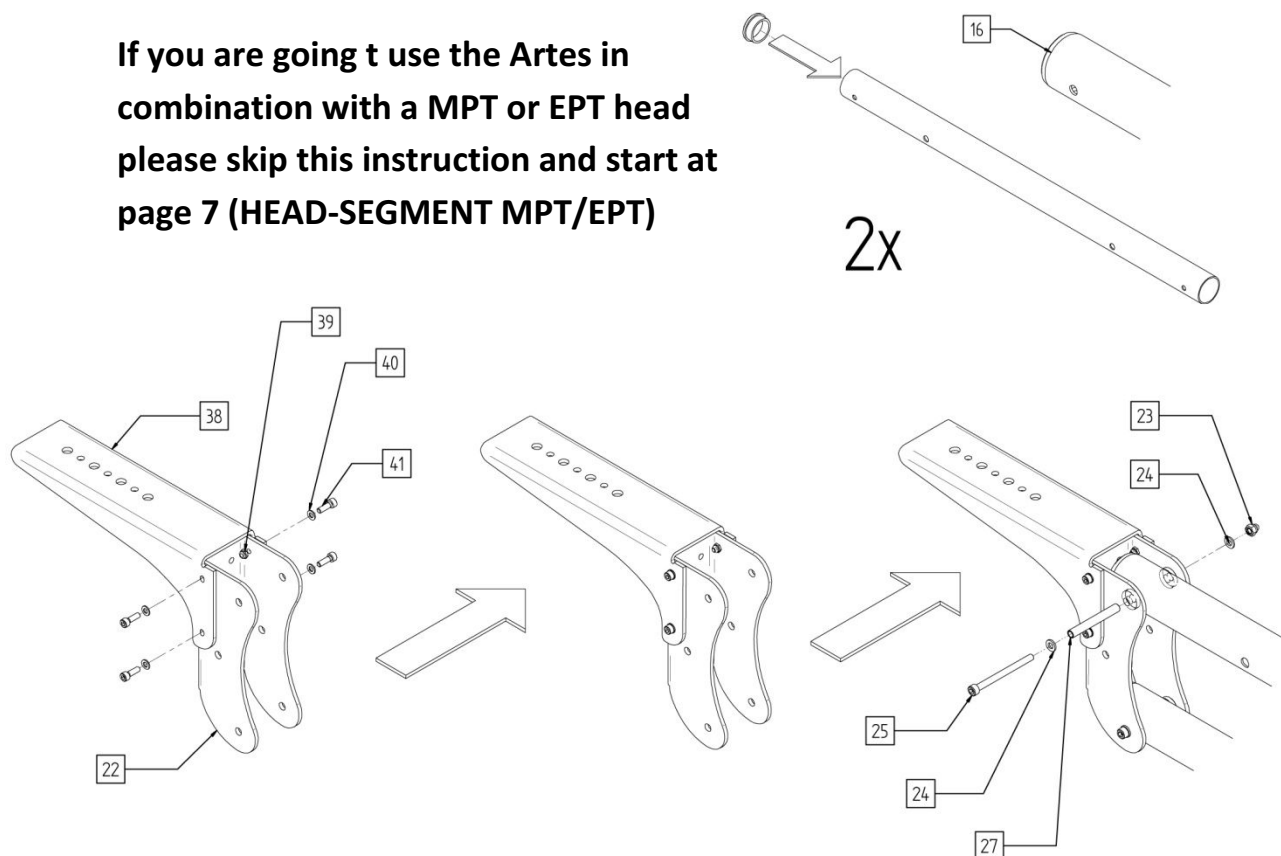
figure 2: ARTES mid-segment



ARTES BASIC SETUP

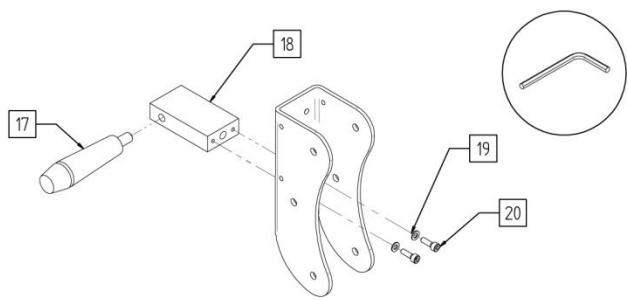
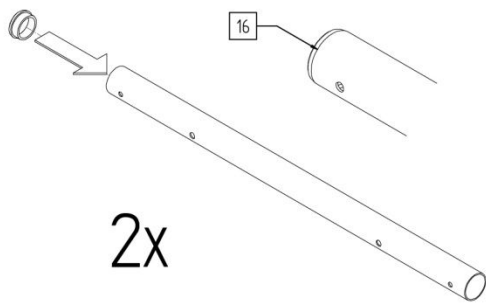
FIXED CAMERA PLATE HEAD SEGMENT

If you are going to use the Artes in combination with a MPT or EPT head please skip this instruction and start at page 7 (HEAD-SEGMENT MPT/EPT)



TAIL-SEGMENT STANDARD ARTES VERSION

figure 3: Fixed camera plate setup head-segment ARTES



HEAD-SEGMENT MPT/EPT VERSION

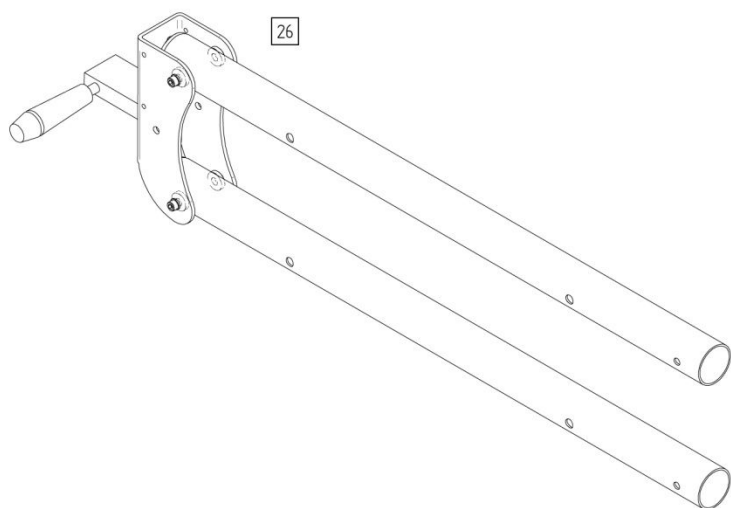
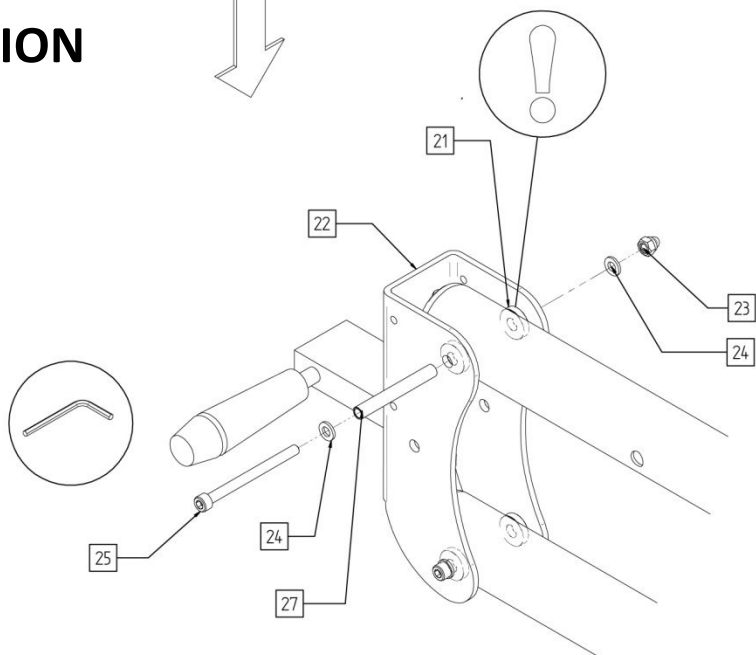
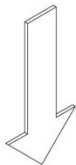
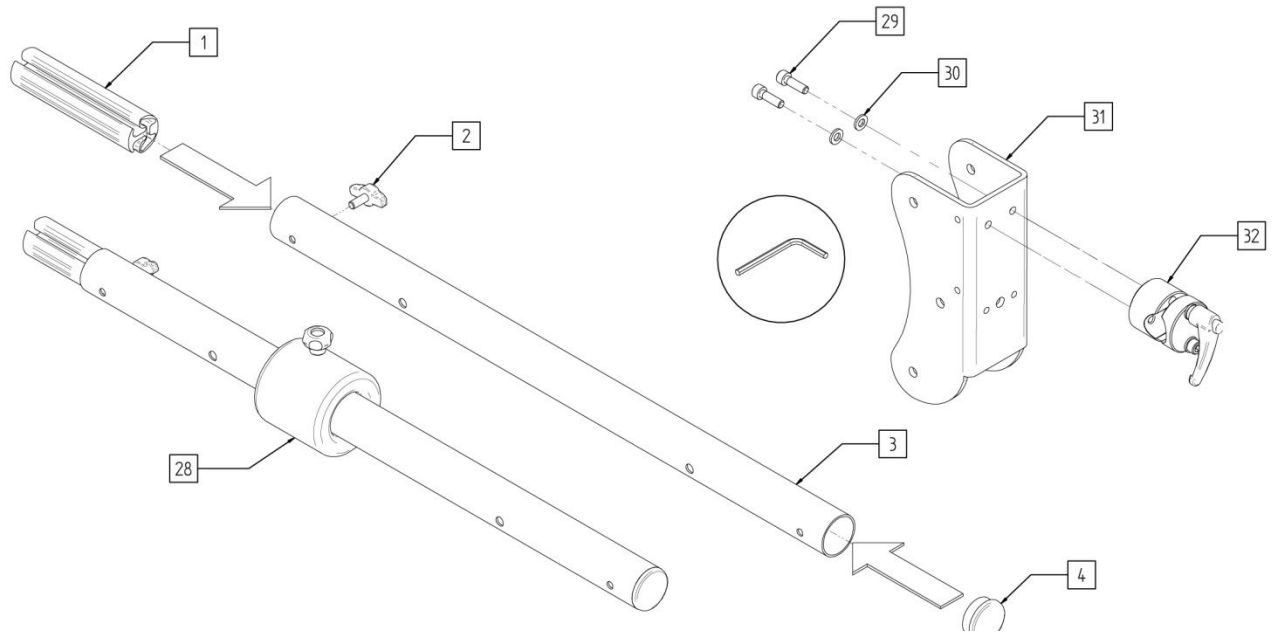


figure 4: ARTES head-segment



TAIL-SEGMENT MPT/EPT VERSION

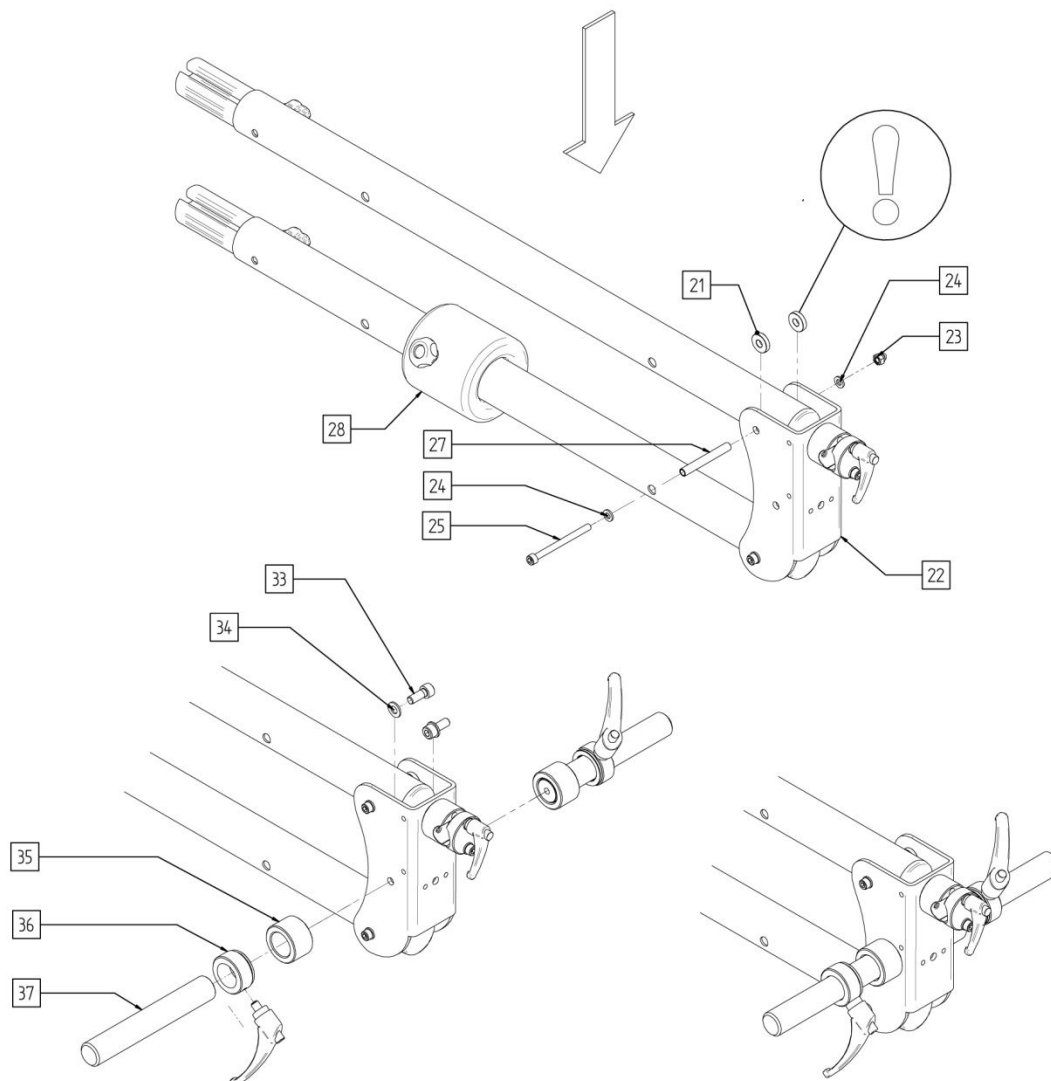


figure 5: ARTES tail-segment

ASSEMBLY STEPS

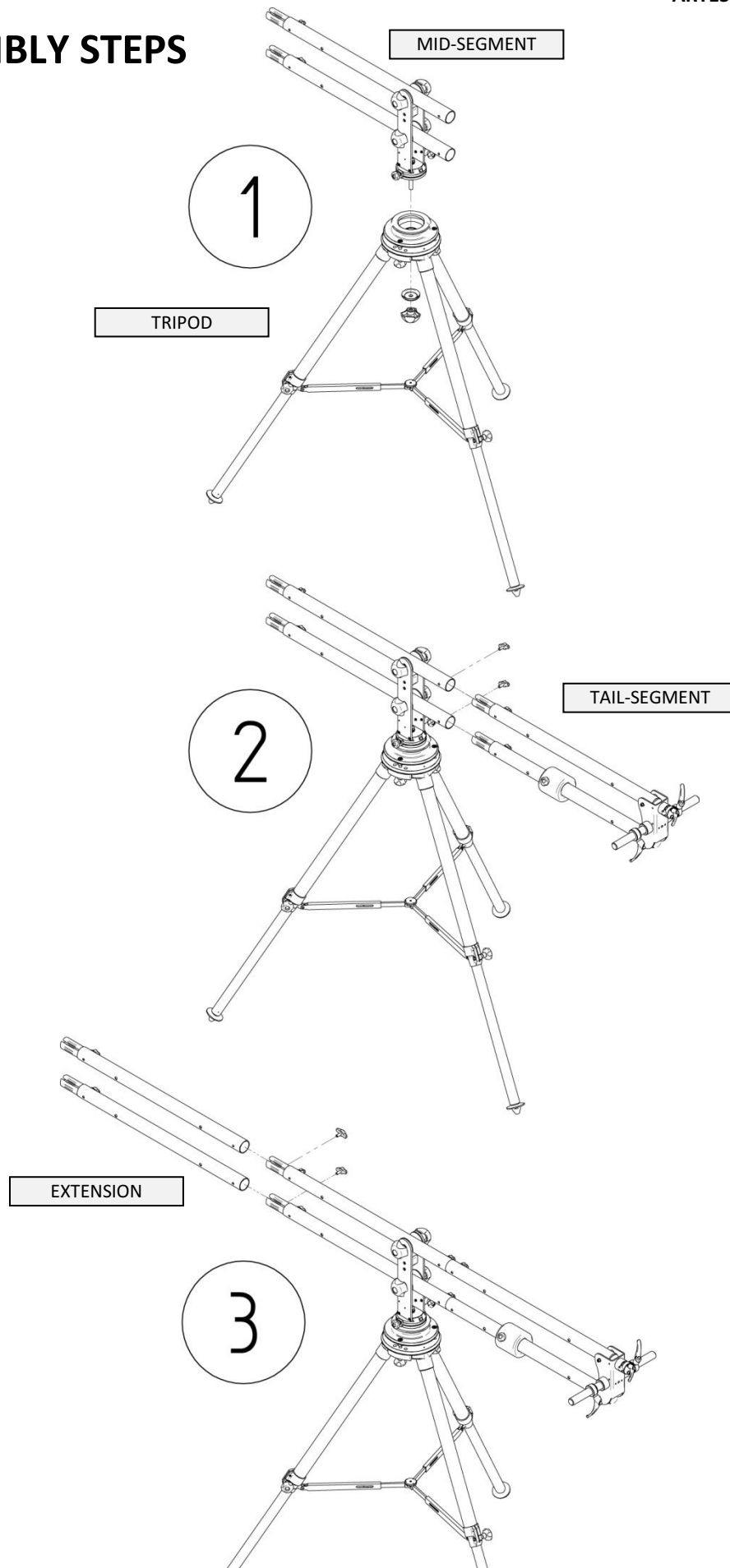


figure 6: assembly steps ARTES

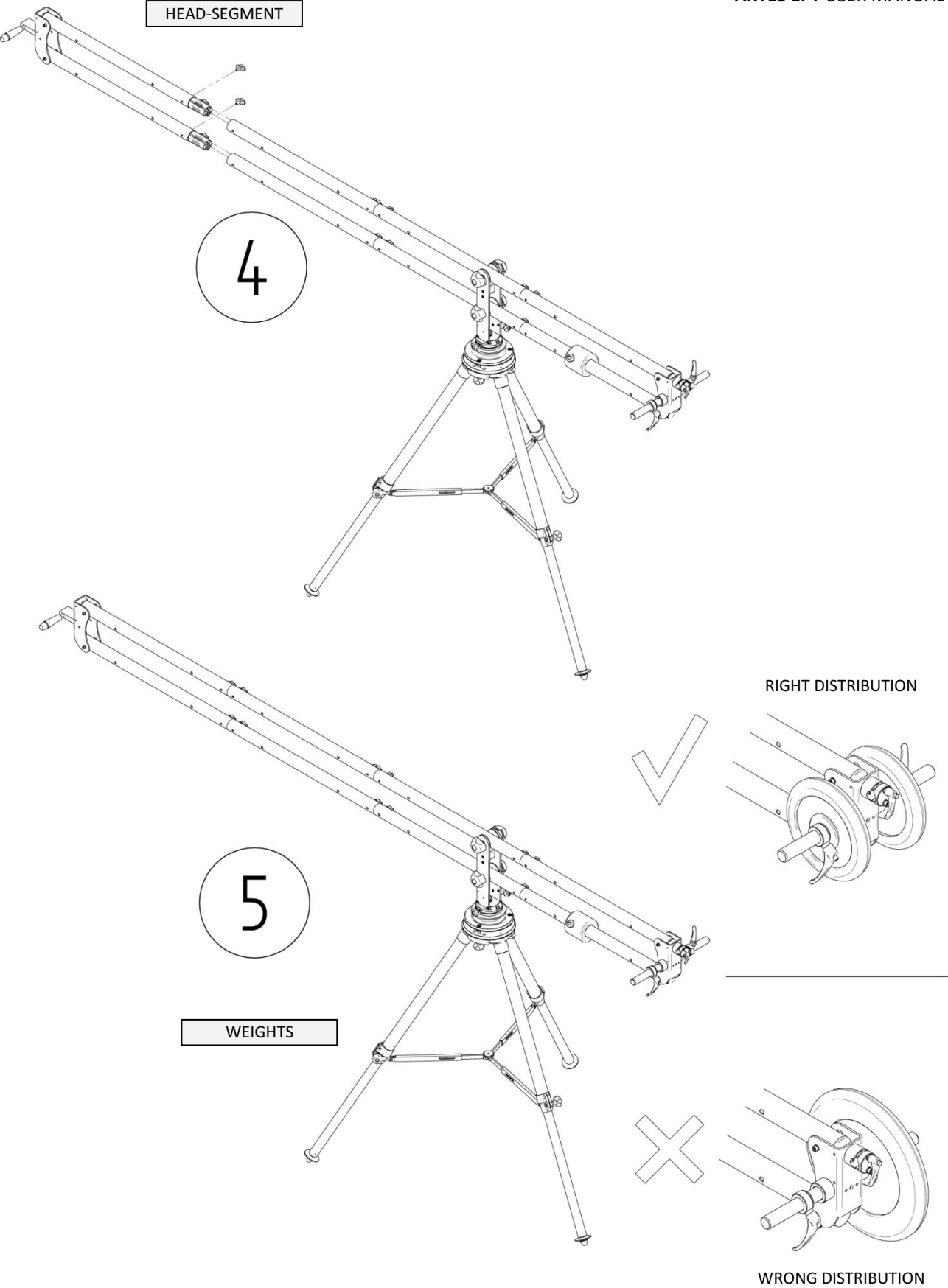
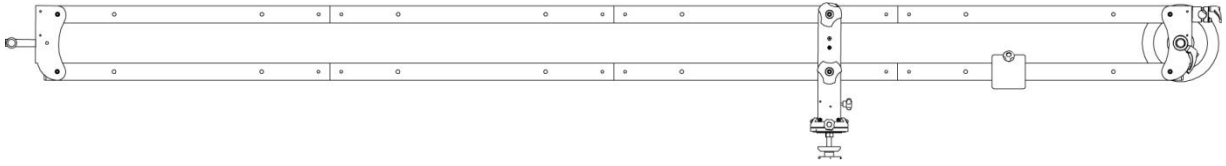
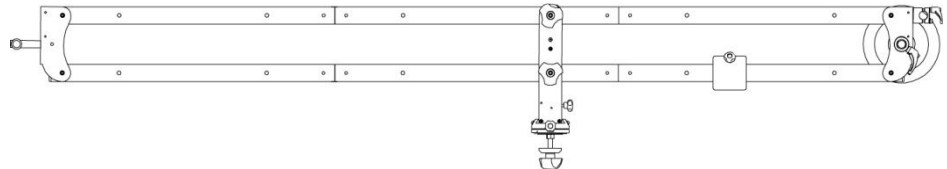
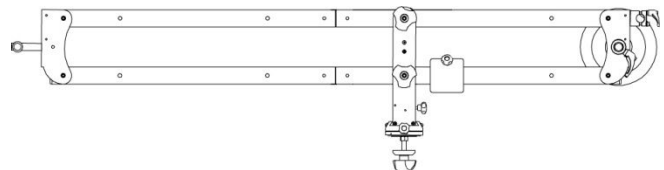


figure 7: assembly steps ARTES

Standard length (with 0,75m extension)**Short length (without 0,75m extension)****Compact setup (with 0,75m extension)****Compact setup short (without 0,75m extension)***figure 8: different ARTES setups***Load Specifications**

- Load Capacity ARTES/EPT Standard Length: 4,5 kg (10 lbs)
- Load Capacity ARTES/EPT Short Length: 7,5 kg (16,5 lbs)
- Load Capacity ARTES/TILT Compact Standard: 7,5 kg (16,5 lbs)
- Load Capacity ARTES/TILT Compact Short: 12 kg (26,5 lbs)
- Load Capacity EPT (on tripod): 7,5 kg (16,5 lbs)

Specifications EPT-unit

- Head Unit weight: 3 kg (6,5 lbs)
- Head Dimensions: 44x31x13cm (17x12x5")
- Durable brushless motors
- Black anodised aluminium
- Standard UTP for communication and power cable
- Power requirement 12 -14,8 V DC
- Tripod (3/8") mount option

Specifications ARTES-unit**(excl. EPT head and counterweights)**

- Weight ARTES Standard Length 9,6 kg
- Weight ARTES Short Length 8,1 kg
- Weight ARTES Compact Standard Length 8,1 kg
- Weight ARTES Short Length 6,6 kg
- Black anodised aluminium



This instruction manual is prepared with care, although no responsibility, financial or otherwise, is accepted for any consequences related the information stated in this instruction manual. All specifications in this instruction manual are subject to change without notice.

For more information please visit the Cambo website: www.cambo.com