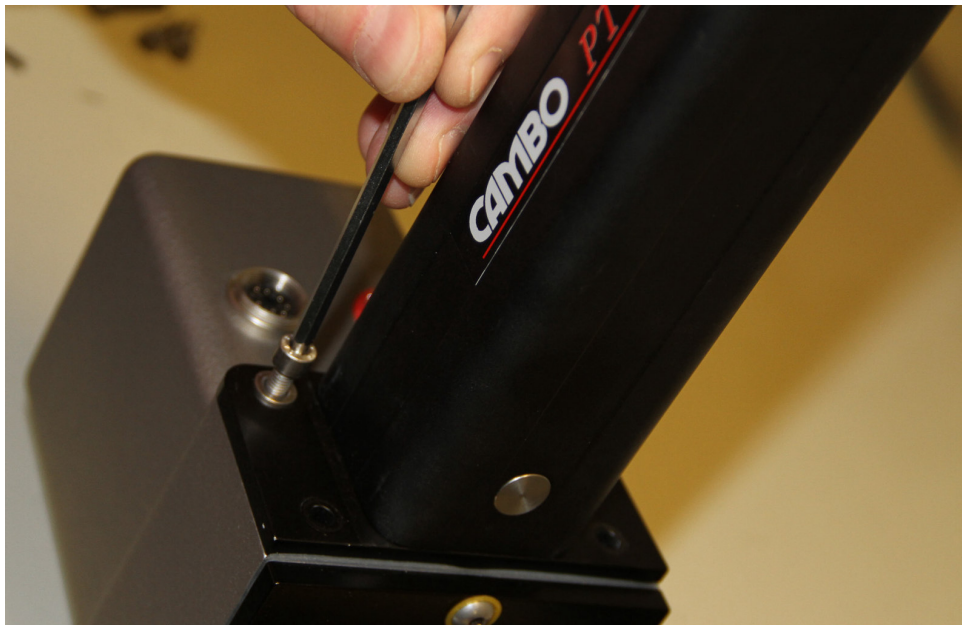


CAMBO PT-134 INSTRUCTION

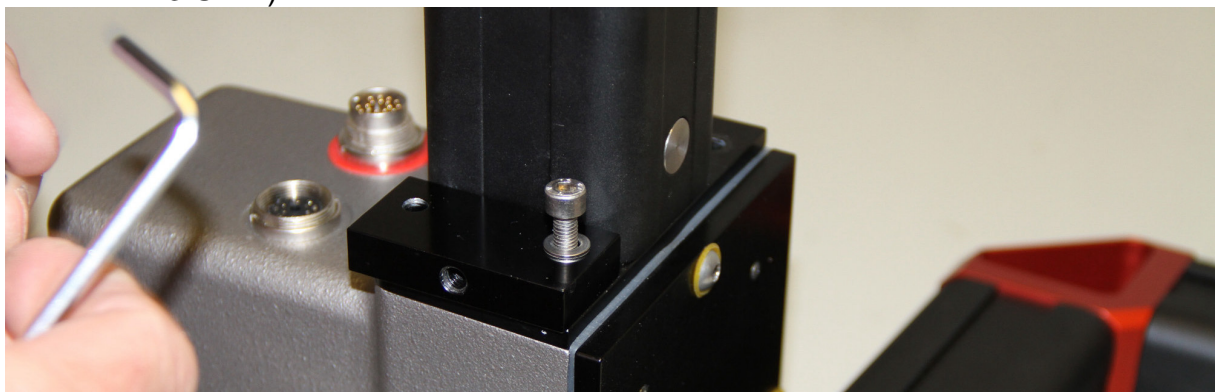
1 REMOVE THE PLATES FROM THE PT-134 BRACKET



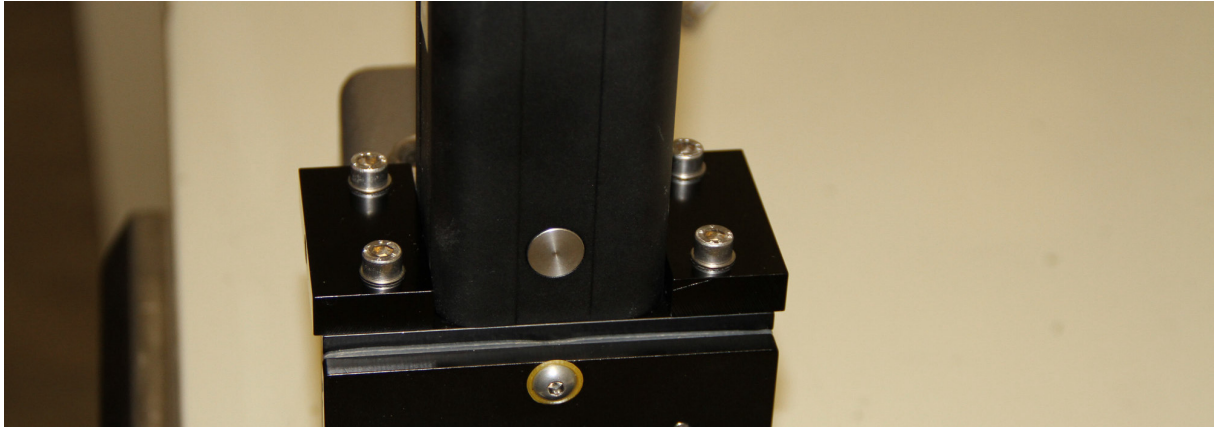
2 UNSCREW THE HEX-SCREWS (WITH A HEX-KEY 4MM) OF THE BOOM MOUNT



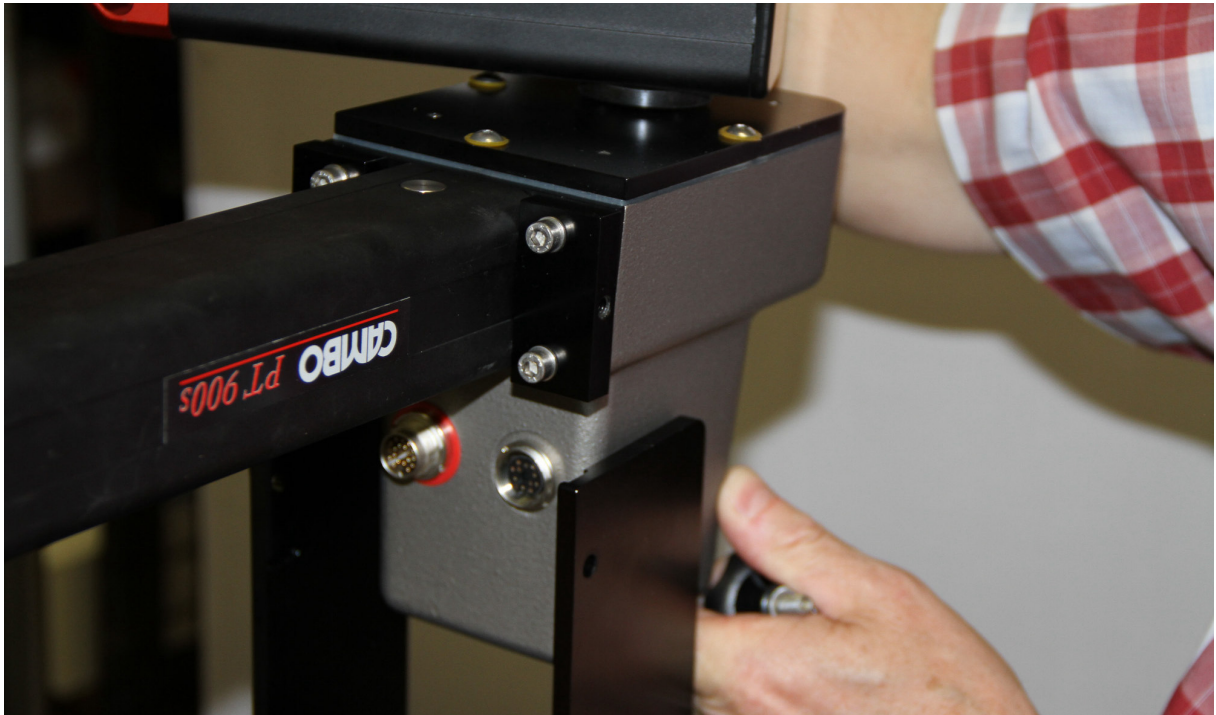
3. ASSEMBLE THE PLATES USING THE LONG HEX SCREWS (PROVIDED WITH THE PT-143 UNIT) WITH A 4MM HEX-KEY



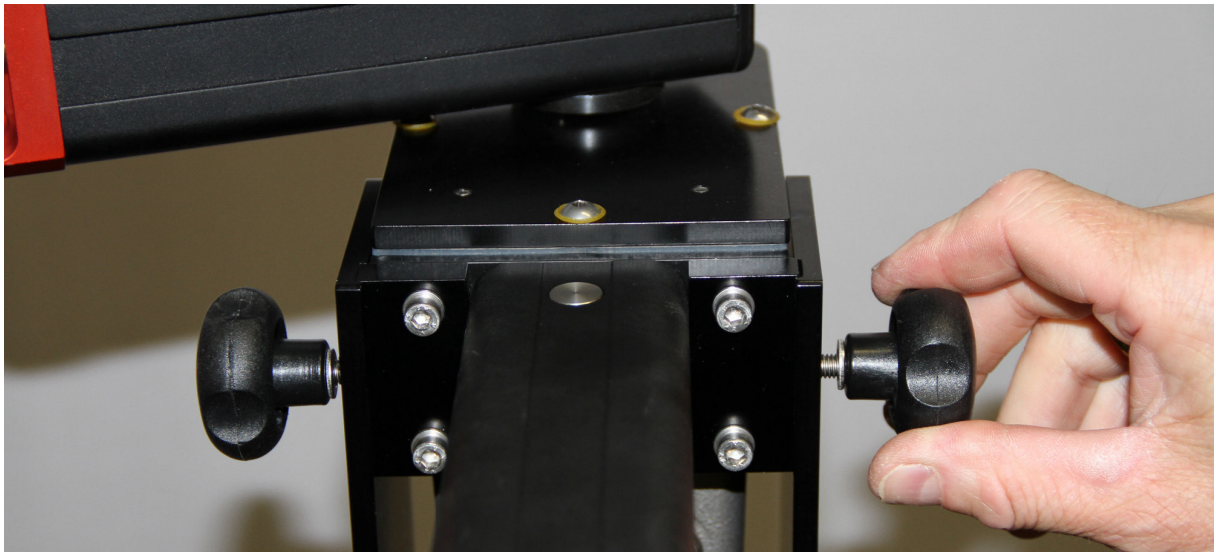
THE ASSEMBLY SHOULD LOOK LIKE THE IMAGE BELOW



4. SLIDE THE PT-900 UNIT WITH MOUNT PLATES IN THE PT-134 BRACKET

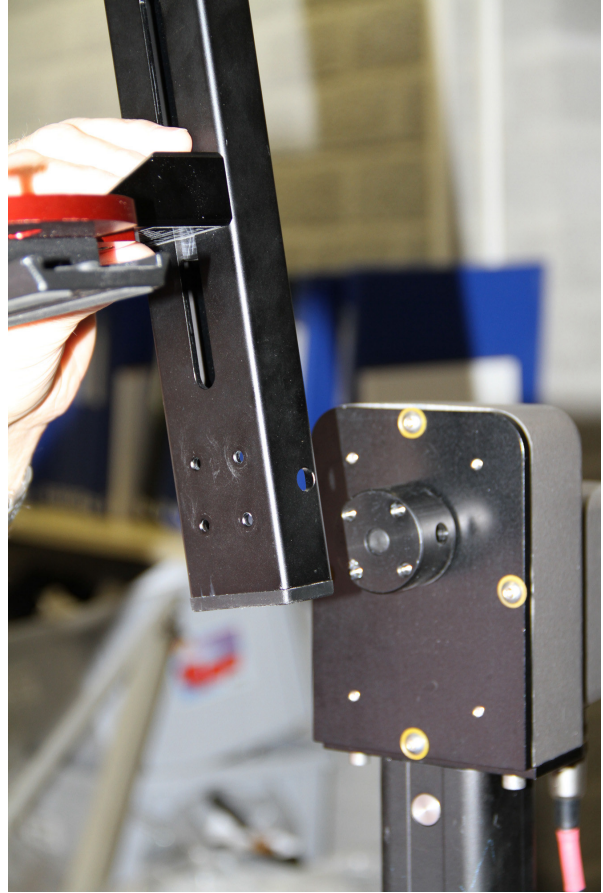


5. FASTEN THE MOUNT PLATES WITH THE PROVIDED KNOBS



IMPORTANT!!! WHEN USING THE PT-134 BRACKET THE PT-900 ENDSTOP (TO PREVENT A COMPLETE ROTATION OF THE ARM IN THE VERTICAL PLANE) IS UPSIDE-DOWN.

PLEASE REMOVE THE HEX-SCREWS (WITH A HEX-KEY 3MM) AND TAKE OF THE ARM. ROTATE THE ARM 180 DEGREES AND REASSEMBLE THE ARM USING THE SAME 4 HEX SCREWS .



THE FINAL ASSEMBLY SHOULD LOOK LIKE THE IMAGE BELOW

