



# EST - ECS - MST STANDS RTM - COPYSTAND

## MOUNTING-INSTRUCTIONS

### TABLE OF CONTENTS

I	Configuration of the stands .....	page 3
II	How to assemble the EST-stand .....	page 5
III	How to assemble the ECS-stand .....	page 9
IV	How to assemble the RTM-Copystand .....	page 12
V	How to assemble the MST-Studiostand .....	page 13

### I CONFIGURATION OF THE STANDS.

EST: EST-Single consists of:

- 1 box E-0 Base
- 1 box E-1 Column
- 1 box E-3 Arm
- 1 box E-10 (1/4) or E-20 (3/8) Camera Platform.

EST-Double consists of:

- 1 box E-0 Base
- 1 box E-1 Column or E-22 Column (total height 2.1 or 2.7 mtr.)
- 1 box E-4 Cross Arm
- 2 boxes E-10 (1/4) or E-20 (3/8) Camera Platform.

ECS: ECS-Stand consists of:

- 1 box ECS-0 Base
- 1 box ECS-1 Column (total height 2.1 mtr.)  
or ECS-2 Column (total height 2.7 mtr.)
- 1 box ECS-4 Cross Arm

Accessories:

- ECS-5 Accessory Tray
- ECS-6 Rotating Adapter.

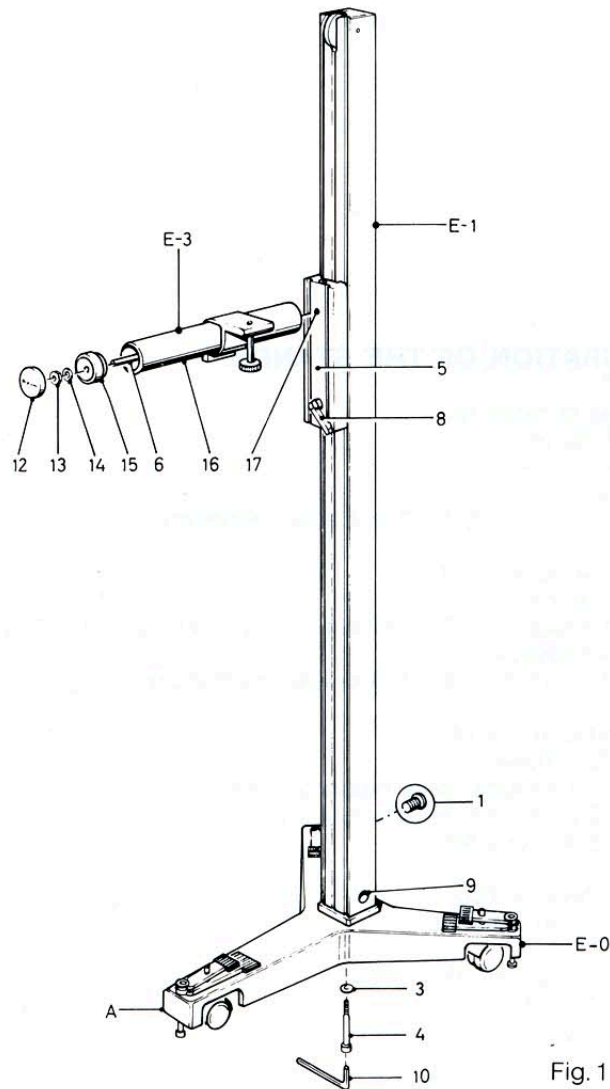
MST: MST-Stand consists of:

- 1 box MST-Base
- 1 box MST-Column.

RTM: RTM-Copy Stand consists of:

- 1 box R-110 Column
- 1 box R-111 Copy Board.

**WARNING: ALWAYS PLACE THE COLUMN IN A HORIZONTAL POSITION WHEN CHANGING OR ADJUSTING THE COUNTERWEIGHT, CABLE AND PULLEY ASSEMBLY.**

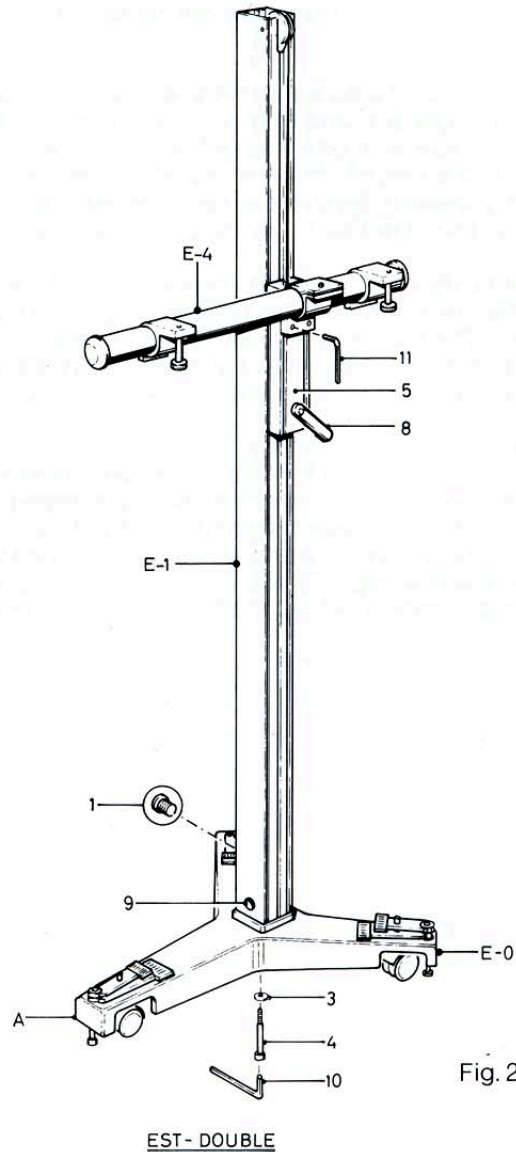


## II HOW TO ASSEMBLE THE EST-STAND. (see fig. 1)

- A. Unpack the base. The base is already mounted and ready for use. In the packing you will find a box with the following parts:  
 1 bolt to mount the column to the base (4)  
 1 washer (3)  
 1 wrench (10).
- B. Unpack the column. In the packing you will also find the following part:  
 1 handle (8) to lock the sliding piece (5). At the backside of the column there is a screw (1) which keeps the counterweight in place, and a hex-screw on the sliding piece, to keep that in place. Do not remove this screws before the instruction tells you.
- C. Place the column flat on the floor with the sliding piece (5) pointing upwards, when mounting a single arm, and with the sliding piece sideways in case of mounting a double cross-arm. (see figures 1 and 2). Slip washer (3) to screw (4). Fix the base so to the column, that the leg (A) in line with the square in the middle, is pointing upwards. Screw (4) can be tightened with wrench (10) into bar (9). Tighten firmly. The stand can now be placed vertically.
- D. Place brake-handle (8) into the lowest threaded hole of the sliding piece (5), after removing the hex-screw from this hole, and lock the brake by turning the handle clockwise. The handle is adjustable. To find the correct position, just pull the grip outward, turn and replace it in the desired position. Now you can remove the screw (1) and check the vertical movements.
- E. Mounting the E-3 single arm: (see fig. 1)  
 Remove nut and washer (13/14) from the rod (6) and remove cover (15). Take the rod out of the tube (16), and screw it into the upper threaded hole (17) of the sliding piece. Place tube (16) over the rod (6) so, that the slot fits to the slots in the sliding piece. Place cover (15) and washer (14) before tightening nut (13). Tighten firmly. Place end cap (12) onto cover (15) by pressing it in the right position. Place the camera-platform E-10/E-20 onto the arm E-3.

- F. Mounting the E-4 double cross-arm: (see fig. 2)  
 Unpack arm E-4. In the packing you will find wrench (11). The connection-clamp has two wedges, which will fit into the two slots of the sliding piece (5), to be inserted from the upperside of the sliding piece. Tighten the wedges with the two hexagonal socket screws from the frontside with wrench (11).  
 Make sure the arm is leveled horizontally before tightening completely.  
 The long end of the arm is now positioned above leg (A) of the E-0 Base, for maximum stability. (If not, column has to be turned 180° on the base for best operation results.)  
 Place the two camera-platforms E-10 or E-20 onto both sides of the arm.

- G. For mounting ECS-5 Accesory tray, we refer to chapter III, part F.





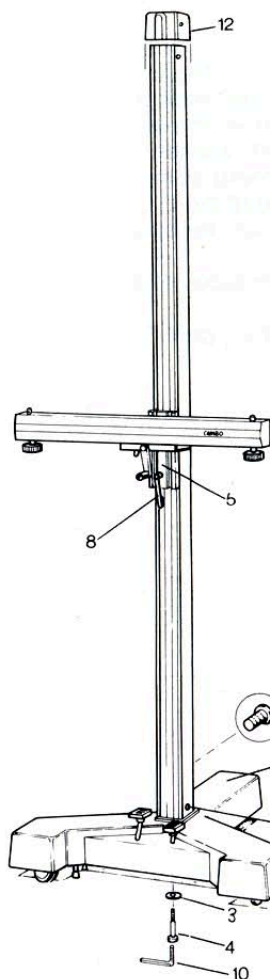


Fig. 3

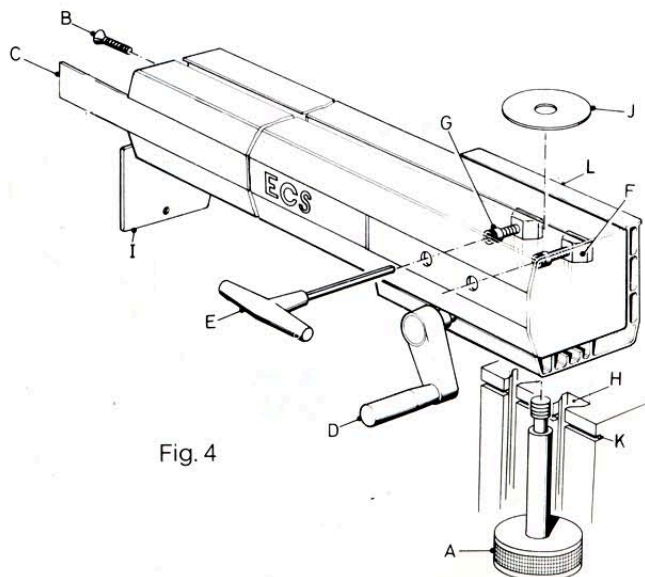


Fig. 4

### III HOW TO ASSEMBLE THE ECS-STAND. (see fig. 3)

- A. Unpack the base. The base is already mounted and ready for use.  
In the packing you will find a box with the following parts:  
1 bolt to mount the column to the base (4)  
1 washer (3)  
1 wrench (10).
- B. Unpack the column. In the packing you will also find the following parts:  
1 handle (8) to lock the sliding piece (5),  
1 top cover (12) to attach to top of the column.  
At the backside of the column there is a screw (1) which keeps the counterweight in place. Do not remove this screw before the instruction tells you.
- C. Place the column flat on the floor with the sliding piece (5) pointing downwards. (see picture 3)  
If you have to mount an ECS-6 Rotating adapter, follow first the instructions in part G, then continue with part D. Else: Slip washer (3) to screw (4). Fix the base so to the column, that the leg (A) in line with the square in the middle, is pointing upwards. Screw (4) can be tightened with wrench (10) into bar (9). Tighten firmly. The stand can now be placed vertically.
- D. Place brake-handle (8) into the lowest threaded hole of the sliding piece (5), after removing the hex-screw from this hole, and lock the brake by turning the handle clockwise. The handle is adjustable. To find the correct position, just pull the grip outward, turn and replace it in the desired position.  
Now you can remove the screw (1) and check the vertical movements. Snap the top cover (12) onto the top of the stand so, that the pins extend the holes.
- E. Mounting the ECS-4 Cross-arm: (see fig. 4)  
Unpack the cross-arm, in the packing is a box with the next parts: 1 handle (D), 1 wrench (E), 2 plates (J).  
Mount the handle (D) to the cross-arm, according to fig. 6. Loosen knob (A) completely. Turn the gear-lever (D) counter-clockwise till endstop. Unscrew screw (B) and turn the coverplate (I) down. Slide the strap (C) leftwards, to uncover the two holes. The wedges (F) can now be placed into the slots (H) of the sliding piece. If needed you can give it more space by unscrewing the wedges a few millimeters. The cross-arm needs to be lowered until the edge (L) is located in slot (K).  
If you have to mount an Accessory-tray ECS-5, read part F, at first, then continue at this point.  
Tighten screws (G) firmly with the hexagonal screwdriver (E). Slide back the strap (C), remount (I) and tighten screws (B). Mount the knob (A).  
When mounting the camera, use of the synthetic pads (J) is recommended.

**WARNING: ALWAYS PLACE THE COLUMN IN A HORIZONTAL POSITION WHEN CHANGING OR ADJUSTING THE COUNTERWEIGHT, CABLE AND PULLEY ASSEMBLY.**

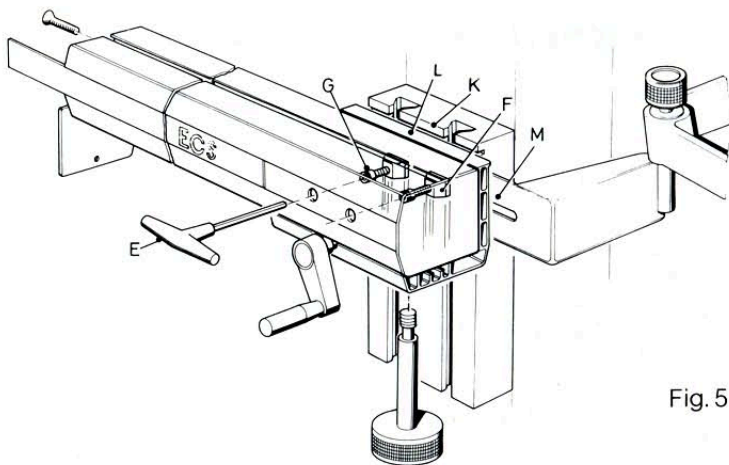


Fig. 5

F. Mounting the ECS-5 Accessory-tray: (see fig. 5)

While supporting the cross-arm, loosen screws (G) enough to be able to slide the plate of the tray-carrier (M) between the sliding piece (K) and cross-arm holder (L). The screws (G) now need to be positioned through the slot in (M). Continue with the instructions of part E.

G. Mounting the ECS-6 Rotating Adapter: (see fig. 7)

The packing contains the following parts:

1 steel tap, 1 aluminium housing, 1 handle, 1 screw with washer. Separate all parts from each other. Mount the steel tap onto the base with the long screw, (length 120 mm) supplied with the base. Mount the aluminium housing to the column with the shorter screw (length 60 mm) supplied with the ECS-6 Adapter. Place the base on its wheels, lift the column over the steel tap, and lower it gently on the steel tap. Do not force, when the stand is not exactly vertical, to avoid damage. Do not remove the lubrication. Replace the brake handle. The handle is adjustable. To find the correct position, just pull the grip outward, turn and replace it in the desired position. Continue with part D.

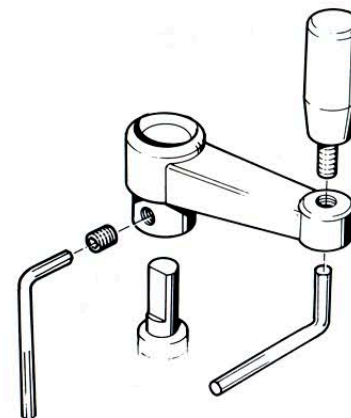


Fig. 6

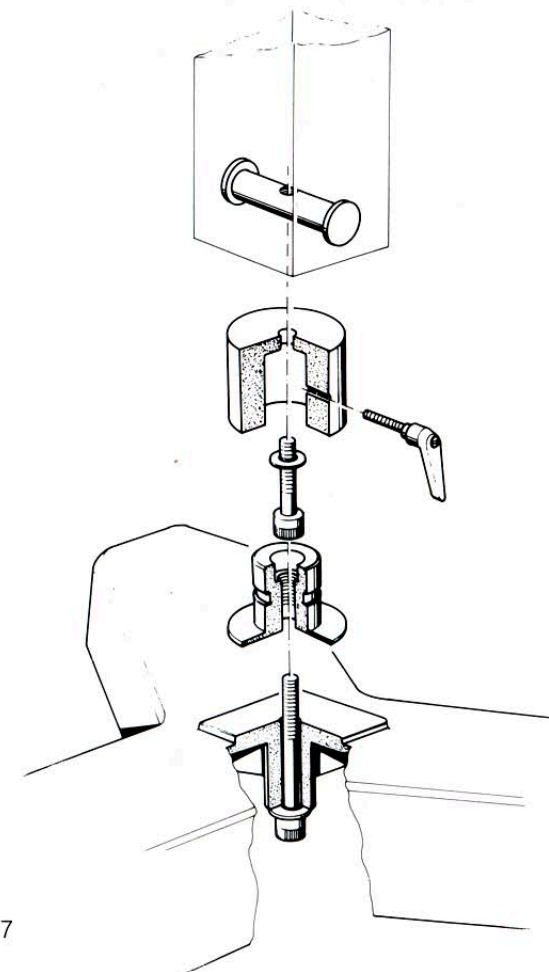


Fig. 7

**WARNING: ALWAYS PLACE THE COLUMN IN A HORIZONTAL POSITION WHEN CHANGING OR ADJUSTING THE COUNTERWEIGHT, CABLE AND PULLEY ASSEMBLY.**



#### IV HOW TO ASSEMBLE THE RTM-COPY STAND (see fig. 8)

- A. Unpack the column. In the packing you will find the handle to be mounted to the sliding piece, and a box with the rotating base. Separate the adapter in its parts.
- B. Unpack the copy-board. The steel tap of the rotating base must be mounted to the board with the short bolt and washer. A wrench is supplied. The aluminium housing must be mounted to the column, with the longer bolt and washer. Now gently lower the column on the steel tap. Do not force when the column is not exactly vertical above the tap, to avoid damage. Do not remove any lubrication.  
Replace the handle to lock the rotating movements.
- C. Mount the gearlever to the sliding piece according to figure 5.  
Extension-bars are available in three different lengths, and can be mounted to the connection-clamp on the sliding piece to attach the camera to.

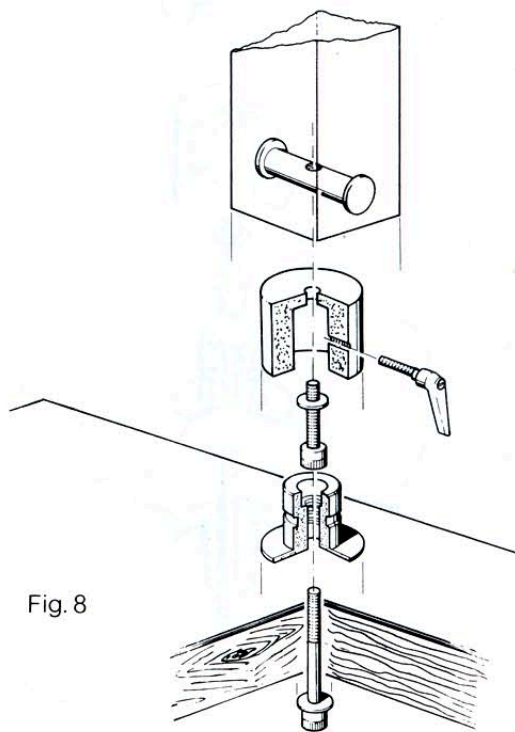


Fig. 8

#### V HOW TO ASSEMBLE THE MST STUDIOSTAND. (see fig. 9)

- A. Unpack the base. In the base you will find the following parts:  
1 bolt to attach the column to the base,  
1 washer,  
1 wrench.
- B. Unpack the column. In the packing you will also find 1 gearlever (A),  
1 bar (B) to lift the stand to move it, 1 tray to mount to the stand (C).
- C. Mount the column to the base with the parts supplied with the base. One leg of the base. One leg of the base has no wheel, just a rubber pad to locate the stand on its place. The bar (B) must be mounted to hole (D) by screwing it in clockwise. Please note that when mounting the column to the base, this bar has to point in the direction of the leg without the wheel, to make the stand easy to move.
- D. Mount the tray to the extending pin (E) by removing the knob (F), sliding the tray on the pin, and mount the knob again. The pin is delivered pointing downwards, it is possible to unscrew the pin and mount the pin pointing upwards, which gives you a higher position of the tray.
- E. Mount the gear lever (A) to the stand according to figure 6. The stand is now ready for use. The connection clamp takes most accessories as used for the Cambo UST studio stands that are needed to support the camera.

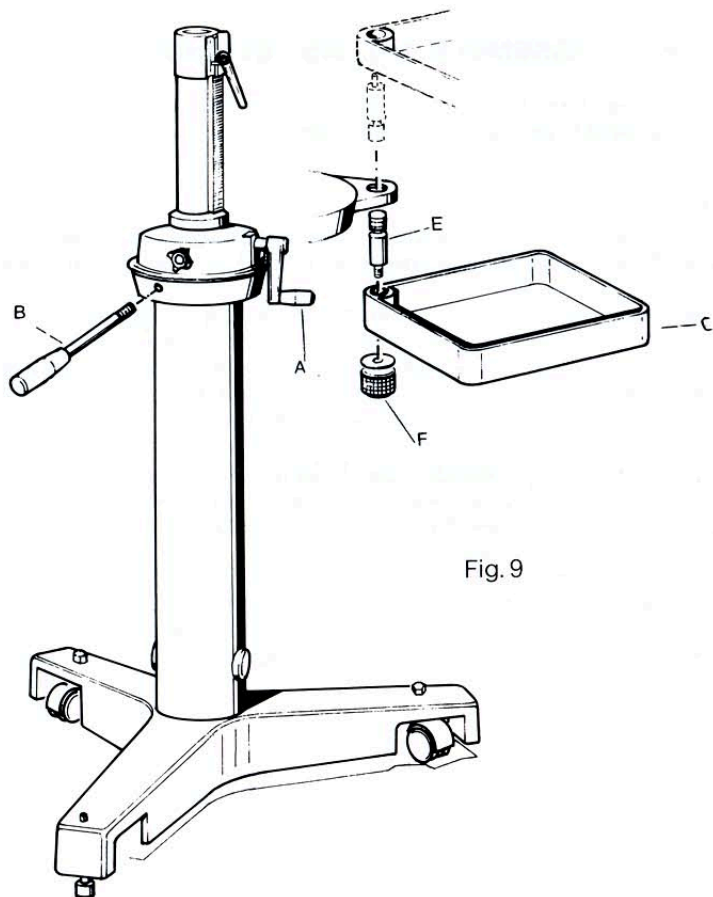


Fig. 9

NOTE: CAMBO believes that the information described in this manual is accurate and reliable, however, no responsibility, financial or otherwise, is accepted for any consequences arising out of the use of this manual or this material.