



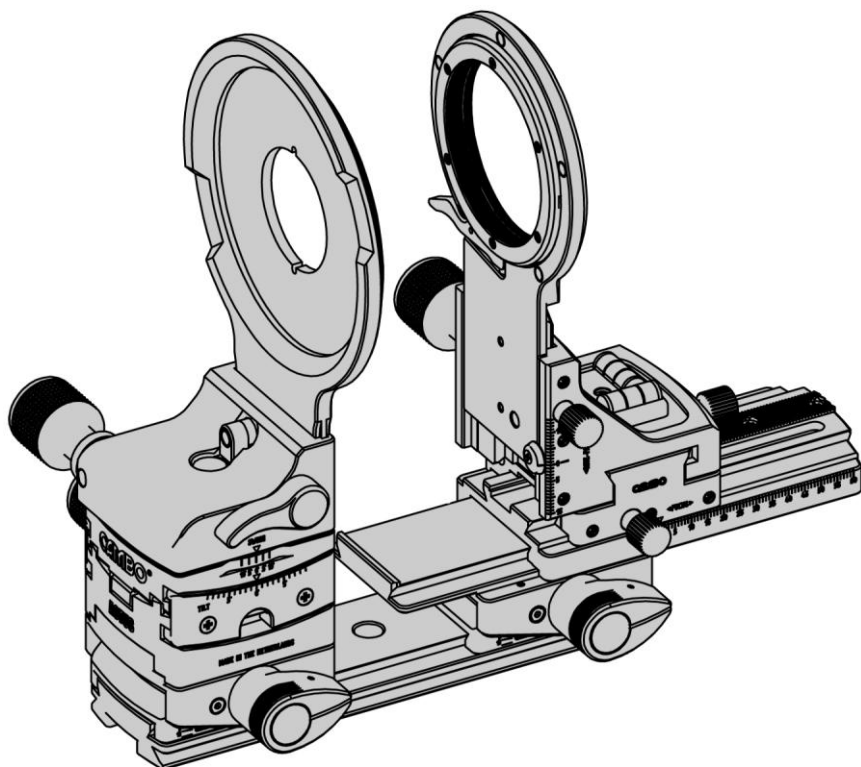
AC-373 Dual Base Tilt

For Actus-B, -G and DB

INSTRUCTION MANUAL

EN

Please read this manual carefully before using the AC-373!



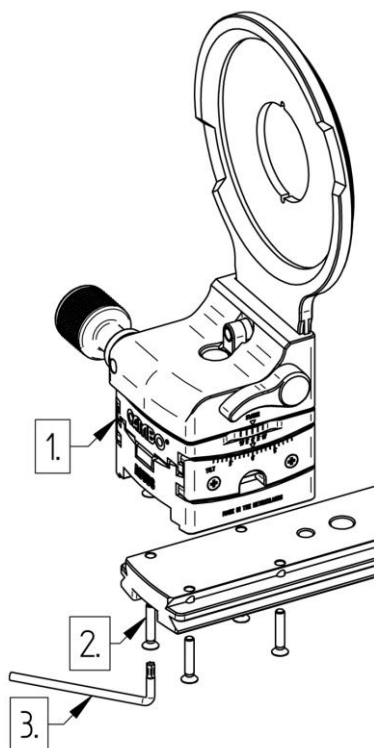
Version 1.00

Thank you for purchasing a Cambo product

The **AC-373 Dual base tilt kit** is an additional kit to the Actus-B, Actus-G or Actus-DB. This kit allows the front and rear standard to tilt $+15^\circ$ / -15° with fixed increments of 5° . The AC-373 also extends the telescopic rail system with 42mm extra travel.

Please read this manual carefully before converting your Actus-B, -G or -DB. Please take all warnings concerning the use of standard Actus systems into account when using an Actus fit with the AC-373 kit. Note that the AC-373 is compatible with all three Actus systems so the images displayed in this manual may differ from the Actus system you own.

1. Removing the Front standard



To remove the front standard [1], unscrew the four M3x16mm or M3x30mm (DB version) Torx bolts [2] using the supplied Torx T10 key [3].

Note that the front standard of the Actus-G and Actus-DB have an extra 16,3mm spacer (see fig 2. [1]) which is not displayed in Figure 1.

Figure 1. Removing the front standard.

2. Removing the rear standard

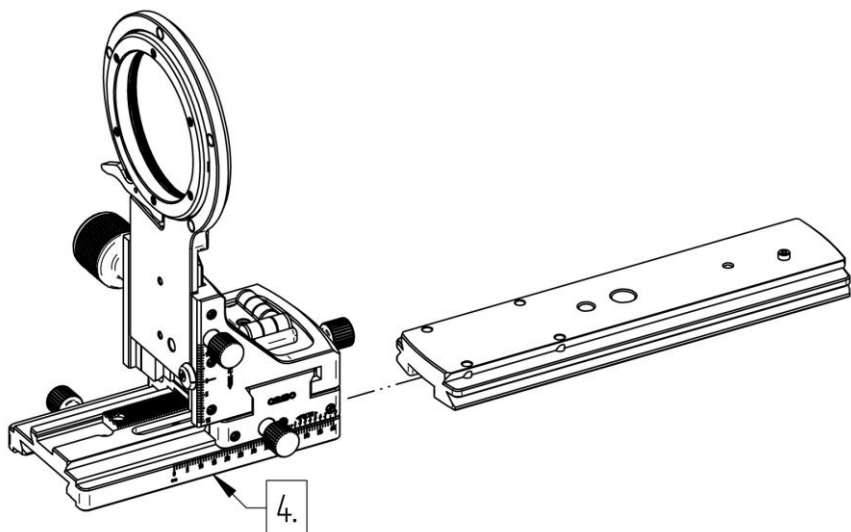


Figure 2. Removing the rear standard.

To remove the rear standard [4] from the Actus, simply slide the rear standard over the front end of the rail.

3. Reassembling the rear standard

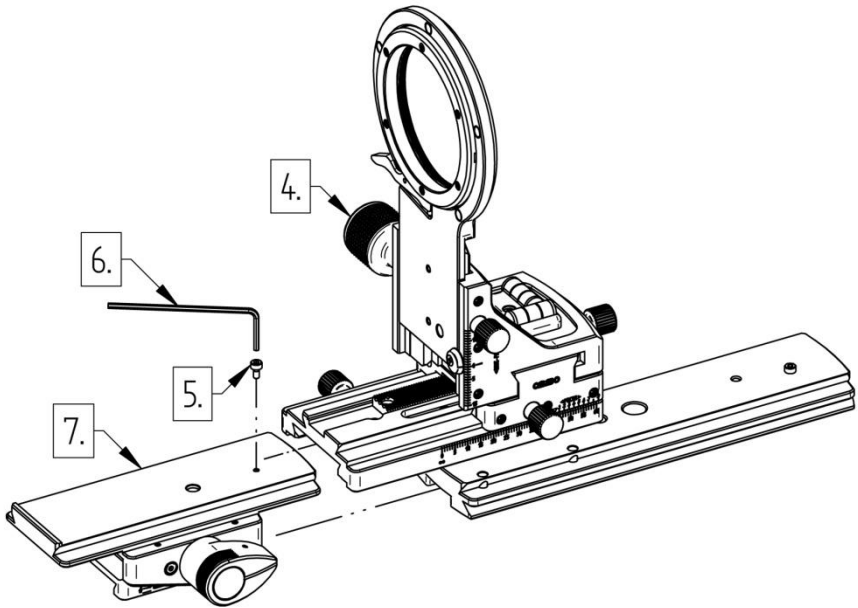


Figure 3. Installing the rear tilt unit.

Start by installing the rear base tilt unit [7] to the Actus rail. Remove the M2x4 [5] from the rear base tilt unit by using the supplied 1,5mm Allen key [6]. Slide the rear base tilt unit over the rail until the rear base tilt unit reaches the end stop. Now slide the rear standard [4] over the rear base tilt unit and align the mounting hole of the rear standard to the threaded hole in the rear base tilt unit. Fit the earlier removed M2x4 bolt [5] to the rear base tilt unit using the Allen key [6]. For adjusting the rear base tilt unit see chapter 5.

4. Reassembling the front standard

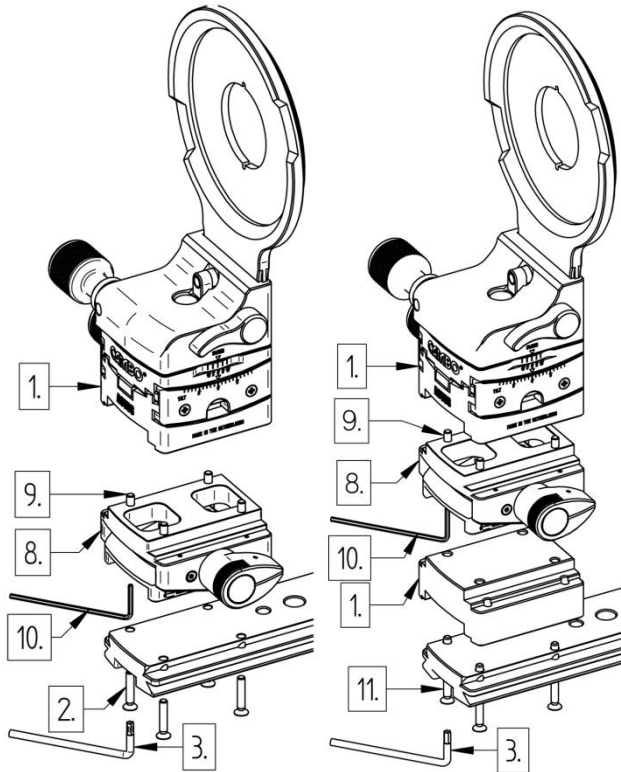


Figure 4. Installing the spacers.(Left, Actus-B, Right, Actus-G and Actus-DB)

Before fixing the tilt unit to the front standard, **make sure the tilt unit is fixed in the 0° position**. Keep the tilt unit fixed in 0° position at all time during assembly. **For the Actus-B** place the front tilt unit [8] below the front standard and fix the tilt unit to the front standard with the supplied M3x12 DIN7991 bolts [9] by using the supplied 2mm Allen key [10]. After fixing the tilt unit to the front standard, use the earlier removed M3x16 ISO14581 Torx screws [2] and the Torx T10 key [3] to fix the tilt unit to the Actus rail. **For the Actus-G and -DB**, after fixing the tilt unit to the front standard, fix the tilt unit and the 16,3mm spacer to the Actus rail with the earlier removed M3x30 ISO14581 Torx screws [11] using Torx T10 key [3]

5. Adjusting the telescopic system

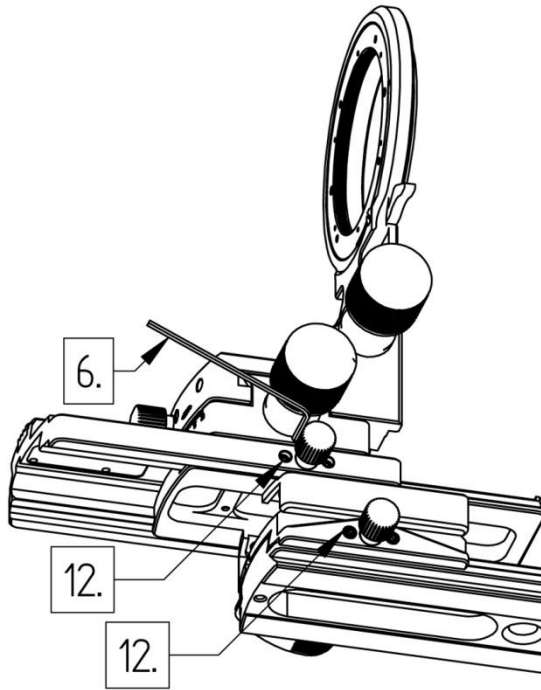


Figure 5. Adjusting the telescopic system.

To avoid play or stalling of the telescopic system after installing the rear base tilt unit, both sliding parts can be readjusted. To remove play from the system set screws [12] should be tightened using Allen key [6]. To avoid stalling, loosen the set screws [12]. Note these adjustments come very close, do not over tighten the set screws!

To complete the full base tilt kit, the bottom tilt unit (See fig.6. [14]) can be fit to the Actus rail using the Arca compatible clamp. The bottom of the bottom tilt unit is fit with an Arca compatible dove tail to fit any Arca compatible tripod head like, for example, the Cambo PCH gear head.

6. Actus with AC-373 added features

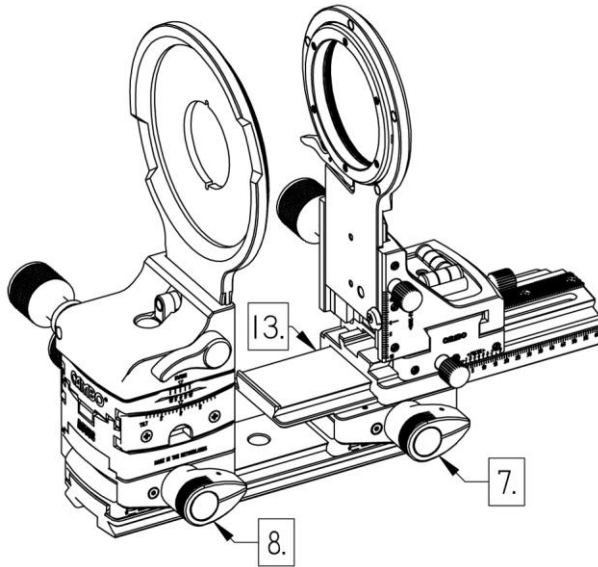


Figure 6. AC-373 Dual base tilt unit.

Now the AC-373 Dual base tilt kit is assembled you have added a front [8] and rear base tilt unit [7] which allow the front and rear standards to tilt to a maximum of $\pm 15^\circ$ with fixed increments of 5° .

Note that you should always support the front and rear standard when you unlock the base tilt unit.

The installed rear base tilt unit also allows for an extra 42mm of telescopic travel [13]. If you will use this extra travel to its maximum extend, for the Actus-B, the standard AC-210 bellow should be replaced by the AC-214 long bellow. For the Actus-DB or Actus-G with DB module the ACDB-250 bellow should be replaced by the ACDB-254 long bellow

This instruction manual is prepared with care, although no responsibility, financial or otherwise, is accepted for any consequences related the information stated in this instruction manual. All specifications in this instruction manual are subject to change without notice.

For more information please visit the Cambo web site: www.cambo.com