



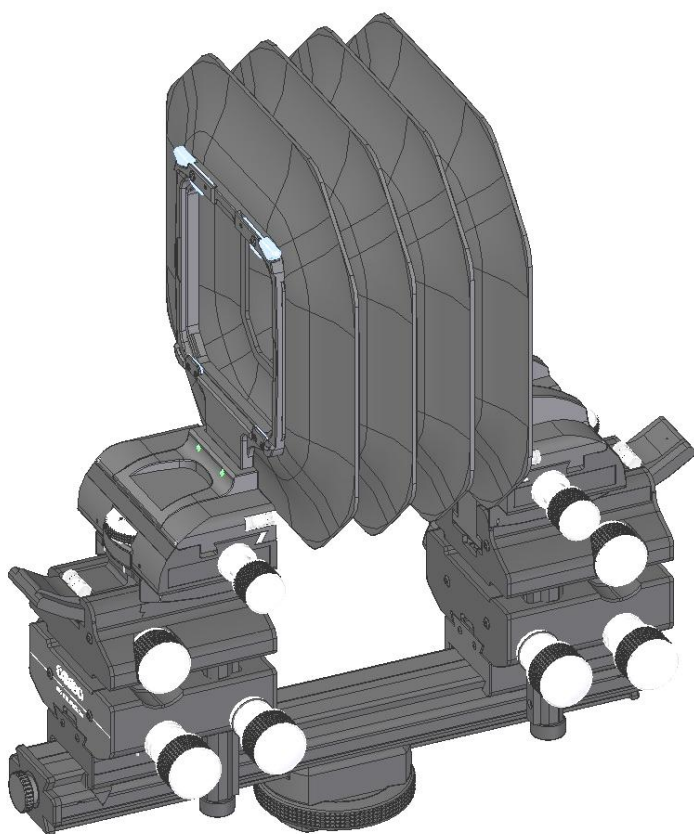
ACTUS-XL DB Kit

[View camera](#)

INSTRUCTION MANUAL

EN

Please read this manual carefully before using the ACTUS-XL DB Kit!





Thank you for purchasing a Cambo product.

The Cambo ACTUS-XL is a new view camera system, evolved from the ACTUS and ULTIMA series. Where the Actus Mini excels in being the lightest and smallest camera platform, the ACTUS-XL system is a fusion of both the Actus and Ultima camera platforms, maintaining full camera movements. Modular is the keyword. The Actus-XL accepts all Actus lens plates and lens adapters, sharing the same mount. On the rear standard you find an easy exchangeable frame holder for either a digital back or a DSLR/Mirror less camera body. Both front and rear standard have lateral movements, vertical adjustments, swings as well as tilts, all for optimized control over perspective and selective sharpness.

With the use of full view camera movements the photographer will be able to be more versatile, be more creative and will be getting more professional results much faster than before.

Configuration of the ACTUS-XL DB Kit:

- Actus-XL View camera body
- ACXL-960 Lens plate holder (Without lens plate)
- ACXL-970 DB frame (Optional DB adapter)
- ACDB-254 Extended bellow (250mm extension)
- UL-30 300mm monorail

1. Key Features

Expand the usability of your camera system

- View camera movement for selective sharpness
- Rear movement for perspective control
- Focal plane shifts to increase file size
- Quick transfer between landscape/portrait
- Built-in macro extension
- Use of various lens designs
- Interchangeable bellows options

Enhance your creativity with the Cambo ACTUS-XL-DB

- Use tilts and swings to place exact sharpness where needed
- Create selective optical un-sharpness
- Use more of the image circle of your lenses
- Stitch your images without changing the lens position
- Focus closer and enlarge your subject without extension rings
- Make use of Rodenstock's and Schneider's best digital optics
- Ideal for use in studio environments

Experience the possibilities of the Cambo ACTUS-XL-DB

- Both standards offer great tilt/swing both on-axis
- Lens plates are quickly interchangeable
- Quick slide focus adjustment rail
- Fine focus adjustment with precision gearing
- Horizontal and vertical movements using geared drive knob
- Zero clicks on all movements
- Image centered rotation from landscape to portrait
- Interchangeable inserts for digital backs, compatible with:
 - Hasselblad-H
 - Hasselblad -V
 - PhaseOne/Mamiya DF/XF
 - Contax
 - Leaf Afi/Sinar HY6

2. Cambo ACTUS-XL-DB Specifications

Size L/W/H:	31x14,5x31,5cm
Weight:	4800 grams
Swing:	+/- 20° both front and rear
Tilt:	+/- 20° both front and rear
Shift vertical:	40mm (20/20) both front and rear
Shift horizontal:	50mm (25/25) both front and rear
Max extension:	170mm (With standard monorail)
(Lens plate to sensor)	(of which 40mm in fine focusing) up to 320mm (With optional monorail extension) Up to 420mm (With optional macro-extension)
Available colors:	Black anodized

3. Warnings

- ⚠ Due to the modularity of the Actus camera system, many camera-lens combinations are possible. Please beware that there is a possibility, with some camera-lens combinations, that the rear element of the lens collides with the rear standard or attached camera. Please note that Cambo is not responsible for any damage done to the Actus, lens or camera, due to improper or careless use.
- ⚠ (Over)exposure to direct sunlight or heat sources will damage the leather bellows. Keep/store the leather bellows in a cool, dry, dust free and ventilated place.
- ⚠ The Actus uses disc magnets to mount the bellows. These permanent magnets (magnetism N45) could cause temporary or permanent damage to equipment¹ sensitive to magnetism like magnetic cards (credit card, ATM card).
- ⚠ Beware that some combinations of swing, tilt, shift and focus adjustments can dismount the bellows.

¹ Please note that memory cards are not magnetic data carriers and will therefore not be damaged by static magnetic fields.

4. Operating instructions

Actus-XL operation knobs, right hand side

1. Slide lock Cambo SLW adapter
2. Frame Cambo SLW interface plate
3. Camera holder dovetail
4. Rear swing adjustment knob
5. Rail extension
6. Front lateral shift adjustment knob
7. Front on-axis tilt adjustment knob
8. Front fine focus adjustment knob
9. Front Rise and fall adjustment knob
10. Rear lateral shift adjustment knob
11. Adjustable tripod mounting block
12. Rear fine focus adjustment knob
13. Rear on-axis tilt adjustment knob
14. Rear rise and fall adjustment knob

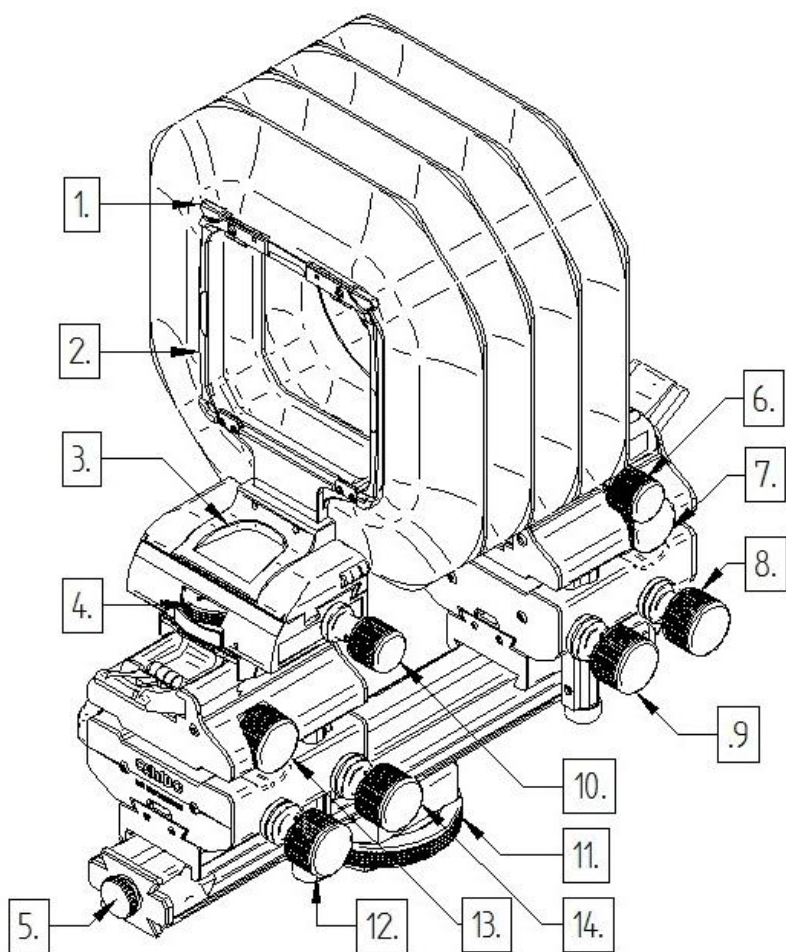


Figure 1 Actus-XL DB, Right hand side

Actus-XL operation knobs, left hand side

- 15. Actus lens panel
- 16. Lens holder dovetail
- 17. Lens panel (un)locking lever
- 18. Front swing adjustment knob
- 19. Locking knob rear fine focus adjustment
- 20. Locking knob rear fast focus adjustment
- 21. Locking knob rear rise and fall movement
- 22. Front depth adjustment screws²
- 23. Locking knob front fast focus adjustment
- 24. Locking knob front fine focus adjustment
- 25. Locking knob front rise and fall movement

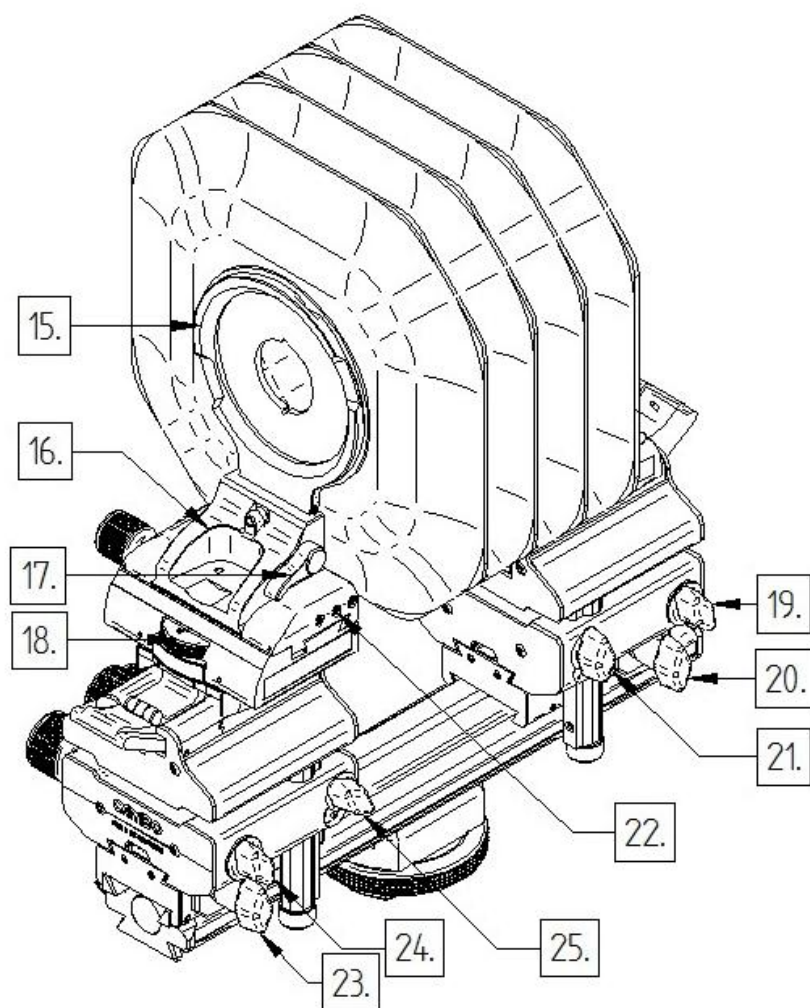


Figure 2 Actus-XL DB, Left hand side

Cambo R&D February 2017

This manual is prepared by Cambo with care, although no responsibility, financially or otherwise, is accepted for any consequences arising out of the use of this manual or this material. All specifications in this manual are subject to change without notice.

CAMBO Fotografische Industrie B.V.

P.O. Box 200	8260 AE
Haatlanderdijk 45	8263 AP
Kampen,	The Netherlands
Telephone:	31(0)38-3314644
Telefax:	31(0)38-3315110
Email:	info@cambo.com
Cambo website:	www.cambo.com
