



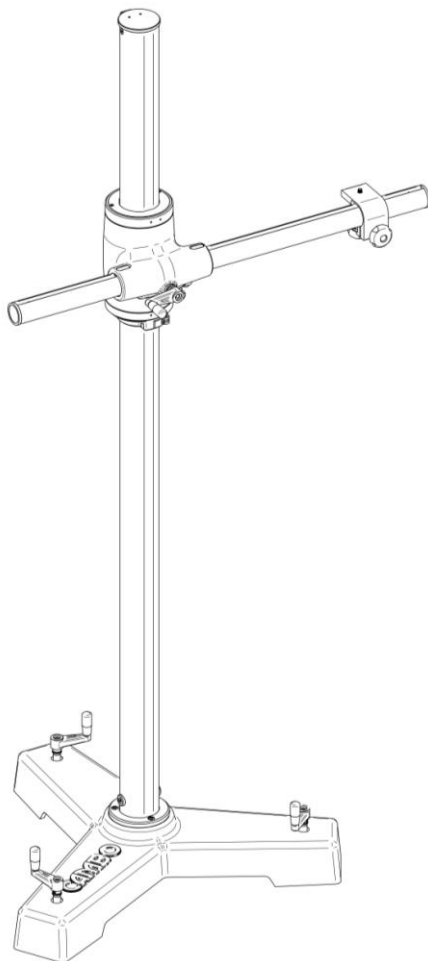
MBX

Mid-range studio stand

INSTRUCTION MANUAL

EN

Please read this manual carefully before using the MBX!





Thank you for purchasing a Cambo product.

This new classed Mid-range studio stand will suit many photographers shooting with medium format camera systems. It is placed between the entry level Mono-stand and the heavier duty UST/UBS stand series.

The MBX stand combines several advantages of the various Cambo stands, such as a ball bearing movement for effortless vertical adjustment as well as rotation of the cross-arm independently of vertical adjustments, derived from the Cambo UBS stand. In addition to that there is a precise geared lateral positioning of the cross-arm.

The MBX counterweight is optimized for a medium format camera with lens and tripod head. Although this can easily be adjusted -using MBX-7 weights- if you choose to add the laptop support tray with computer. The MBX stand is standard available in two lengths, being 2,1 mtr(7') and 2,7 mtr(9') from floor to top. Customized lengths are available on request.

Configuration of the stand:

MBX-1 consists of:

- 1 box MBX-0 Base
- 1 box MBX-1 Column for 2,1 mtr height

MBX-2 consists of:

- 1 box MBX-0 Base
- 1 box MBX-2 Column for 2,7 mtr height

WARNING: Always place the column in a horizontal position when changing or adjusting the counterweight, cable and pulley assembly.

Important note! Before placing the column in vertical position make sure you put tension on the cable by moving the sliding piece and lock the sliding pieces movement by using the clamp lever ([14.] figure 4).

Mounting / operating instructions

Mounting the MBX-1 or MBX-2 studio stand

1. Unpacking. Inside the packing of the base you will find a small box containing the following parts:
 - 3 Bolts M8x16 [5.] to mount the flange to the MBX-0 base
 - 1 bolt M12x45 [4.] to mount the flange to the column
 - 1 Allen key to fit the M8 bolts
 - 1 Allen key to fit the M10 bolt
 - 1 Allen key to fit the M12 bolt
 - 3 cranks [2.]
 - 1 Allen key to mount the cranks
 - 1 Allen key to mount the cross arm
2. Mounting the cranks (fig.1).

On top of the base you will find three studs, on which the three cranks [2.] can be mounted by tightening the set screws [1.] using the supplied key. To lift the stand onto its wheels turn the cranks clockwise, to lock the stand into its place, turn the cranks counter-clockwise.
3. Releasing the counterweight (fig.2)

Remove the M10x60 [3.] locking bolt and remount the flange to the column with the M12x45 [4.] bolt
4. Mounting the column to the base (fig.3).

Place the column vertically over the base and make sure the flange falls in the MBX-0 countersink. Rotate the column to align the flange and threaded holes. Secure the column to the MBX-0 base using the three supplied M8 bolts [5.]. **Tighten firmly!**

WARNING: Always place the column in a horizontal position when changing or adjusting the counterweight, cable and pulley assembly.

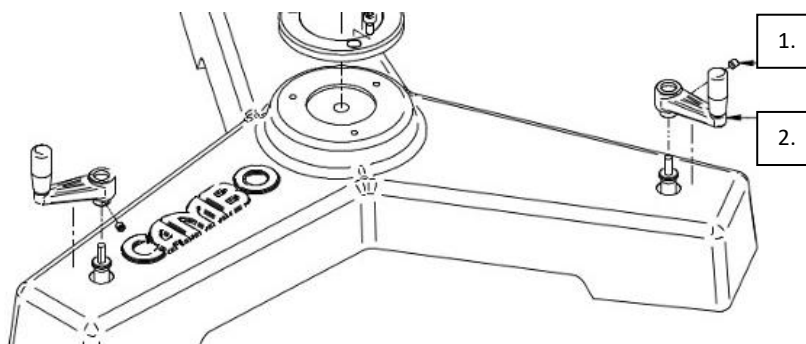


Figure 1. Mounting the cranks.

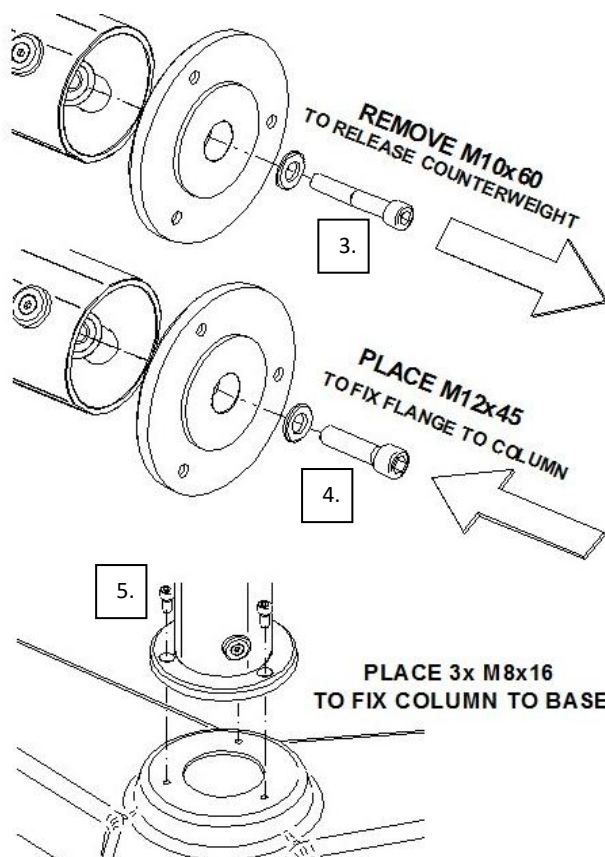


Figure 2. Unlocking the counterweight and mounting the column.

5. Mounting the cross arm (fig.3).

Once the column is placed upright you can start mounting the cross arm by the following steps:

- Remove the right-end cap [6.] from the cross arm (red sticker side).
- Unscrew the hexagon socket head screw [7.] from the geared rack at the right side of the cross arm (red sticker side) using the supplied Allen key (3mm)
- Mount the crank [8.] to the cross-arm gear axle, using the supplied Allen key (4mm)
- Insert the cross arm with the red sticker side through the left side of the sliding piece. Mind that the grooves fit the guiding parts inside the sliding piece and do not apply force doing so. If necessary, assist the cross arm by rotating the crank [8.] clockwise.
- Place the hexagon socket head screw [7.] back into the geared rack and remount the end-cap [6.] to the cross-arm.
- Slide the camera mount [9.] onto the tube. The camera mount can be moved across the tube and fixed secure in any desired position.
- Your MBX-1 or MBX-2 is now fully assembled and ready for use!

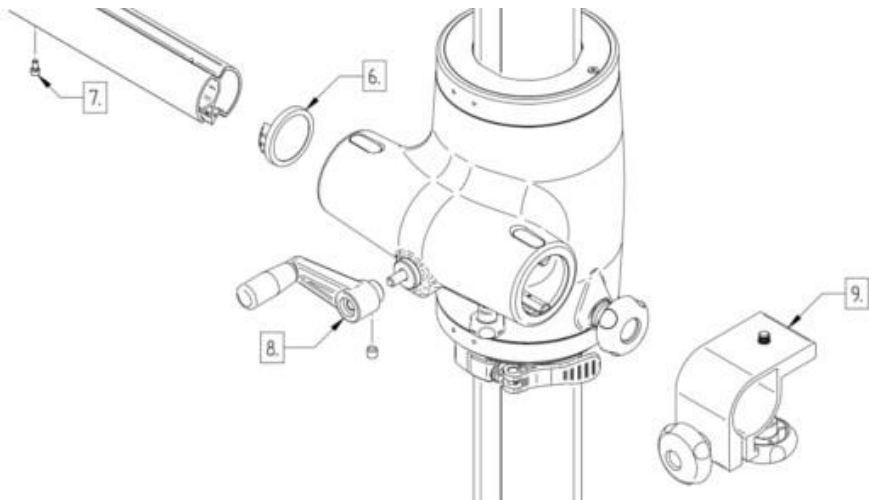


Figure 3. Mounting the cross-arm

Operating the MBX-1 / MBX-2 studio stand

- Turn the three cranks of the base counter-clockwise to lock the MBX-stand into position before use to gain maximal stability.
- To move the cross-arm horizontally left or right, rotate the crank [8.] clockwise or counter-clockwise.
- To apply more friction to the cross-arm, for more precise movement, or to lock the cross-arm into position use friction knob [12.].
- Use knob [13.] to lock the rotational movement of the sliding piece.
- To lock the sliding piece's vertical movement you have to use the clamp lever [14.]. Push the lever towards the column to lock, or pull it away from the column to unlock.

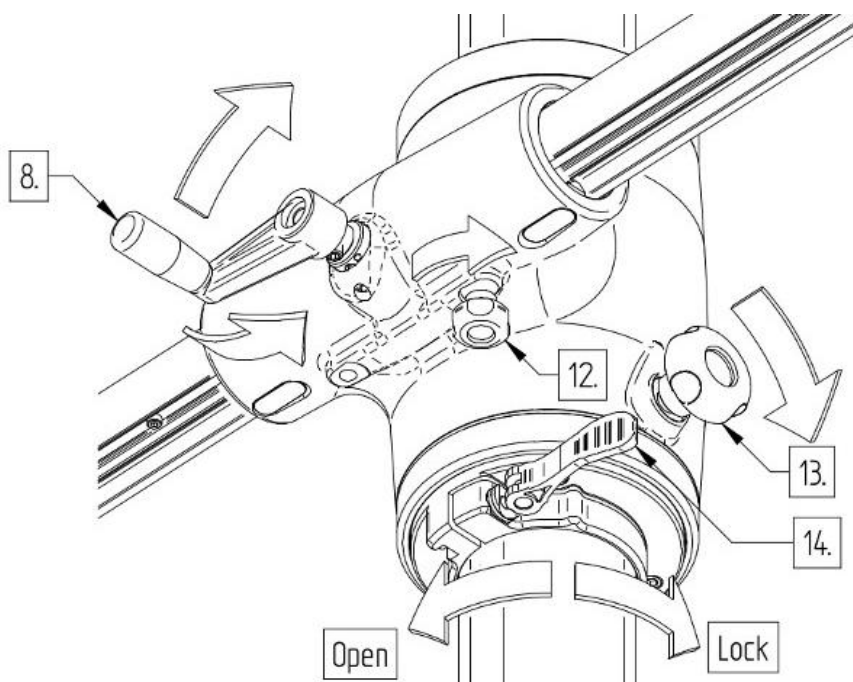


Figure 4. Operating the MBX-1

Loading instructions (Important!)

The MBX-stand is designed for the use of different cameras up to 6Kg. Cameras and/or tripod heads can be mounted on both ends of the cross arm using the included 3/8" Mono-20 camera mount [9.]. Note that you are strongly advised against applying loads greater than the maximum of 6Kg at one end of the cross arm in any case! The load capacity of the MBX-stand can be adjusted using the MBX-7 additional counterweights (See page 9) to an advised maximum of 9Kg. If possible we advise you to operate the cross arm above one of the MBX-0 bases legs.

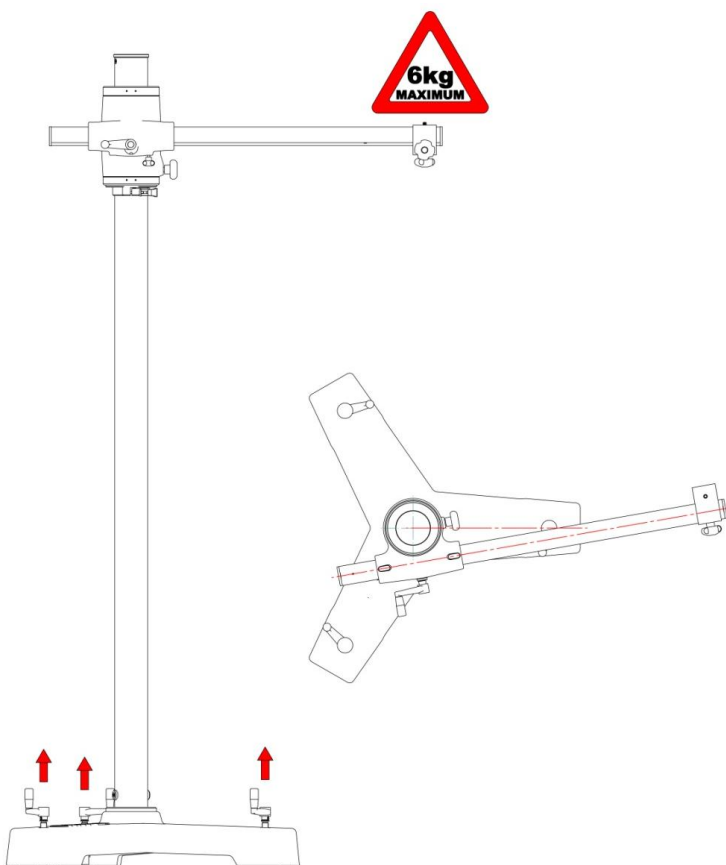


Figure 5. Loading instructions.

Mounting accessories (Optional)

For more convenience during the use of the MBX-stand, Cambo offers several accessories like the Mono-52 laptop table [15.] and the Mono-5 accessory table.

- The Mono-52 laptop table [15.] can easily be mounted to the cross-arm by the included clamp.
- To fit the Mono-5 accessory tray [16.], screw the steel stud into the M10 threaded hole located at the bottom-side of the sliding piece.
- Secure firmly using a steel driver through the hole in the stud. Slide the tray over the stud and mount washer and knob.
- The tray can be swiveled left and right.

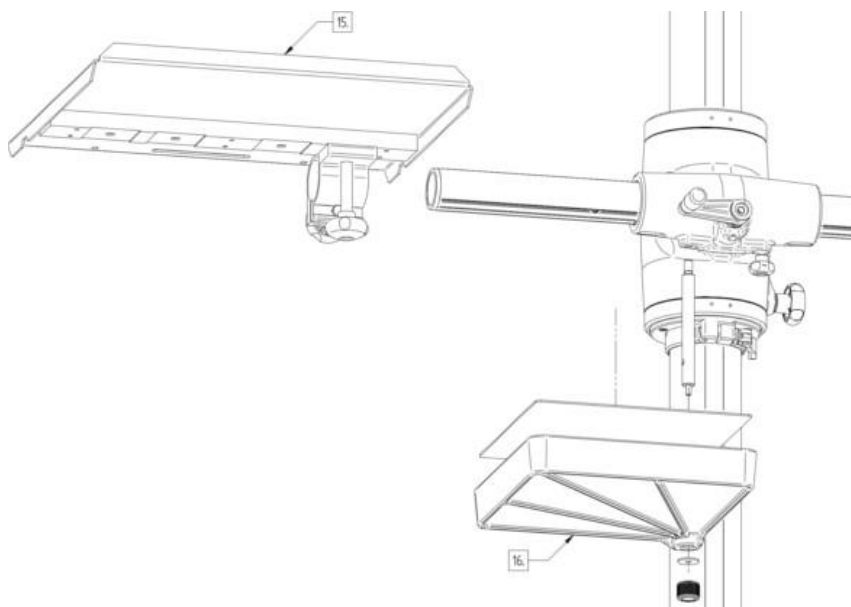


Figure 6. Mono-5 and Mono-52 accessories.

The MBX-Stands come standard with an Mono-20 3/8" camera mount. It is also possible to fit UBS/UST series camera platforms by using the MBX-9 adapter [11.]. To fit the MBX-9 to the MBX cross-arm:

- remove the end-cap [6.] from the cross-arm.
- Slide the MBX-9 over the cross-arm and fit bolt [10.] into the designated hole in the cross-arm.
- Tighten bolt [12.] firmly and the MBX-9 adapter is ready for use.

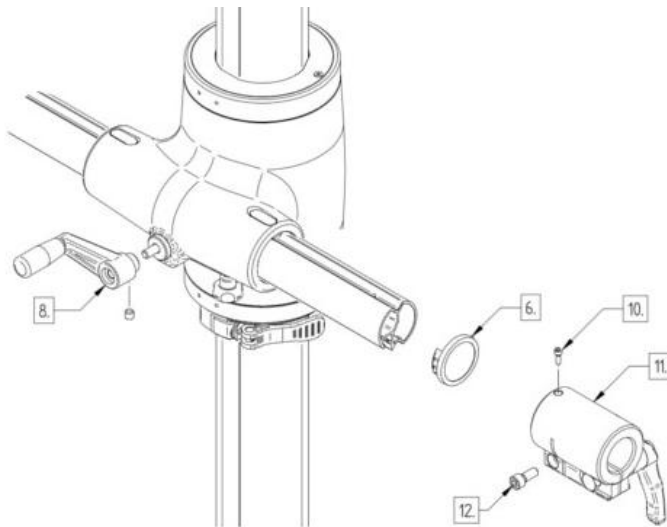


Figure 7. MBX-9 mounting.

Adding Counterweight (Optional)

The MBX counterweight is optimized for a medium format cameras with lens and tripod head up to 6Kg. The capacity can be adjusted using MBX-7 weights if you choose to add the laptop table with computer and/or accessory tray. Using the MBX-7 you can increase the counterweight with increments of 1Kg.

To add the MBX-7 counterweight:

- Remove all loads from the cross arm and move it so both ends equally extend from the sliding piece.
- Lock the sliding piece in its highest position.
- Remove the column from the MBX-0 base and place the column in a supported horizontal position.
- Remove the flange and the shaft from the column.
- Prevent the counterweight from rotating by placing a pin in one of the counterweight's holes, and screw on the MBX-7 weight.
- Lock the MBX-7 in position by tightening the M6 set screw.
- Push the weight back into the column and carefully reassemble the column.

Important notes!

- Use no more than three MBX-7 units on a single MBX-stand!
- Although the counterweight has increased, do not apply loads greater than 6Kg on one end of the cross arm! Distribute the extra weight over both ends.

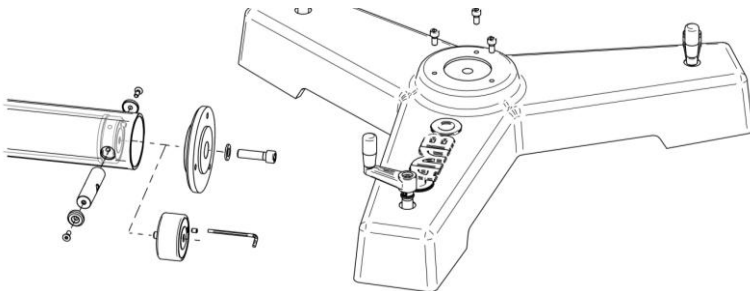


Figure 8. Adding MBX-7 counterweight.

Cambo R&D September 2016

This manual is prepared by Cambo with care, although no responsibility, financial or otherwise, is accepted for any consequences arising out of the use of this manual or this material. All specifications in this manual are subject to change without notice.

CAMBO Fotografische Industrie B.V.

P.O. Box 200	8260 AE
Haatlanderdijk 45	8263 AP
Kampen,	The Netherlands
Telephone:	31(0)38-3314644
Telefax:	31(0)38-3315110
Email:	info@cambo.com
Cambo website:	www.cambo.com
